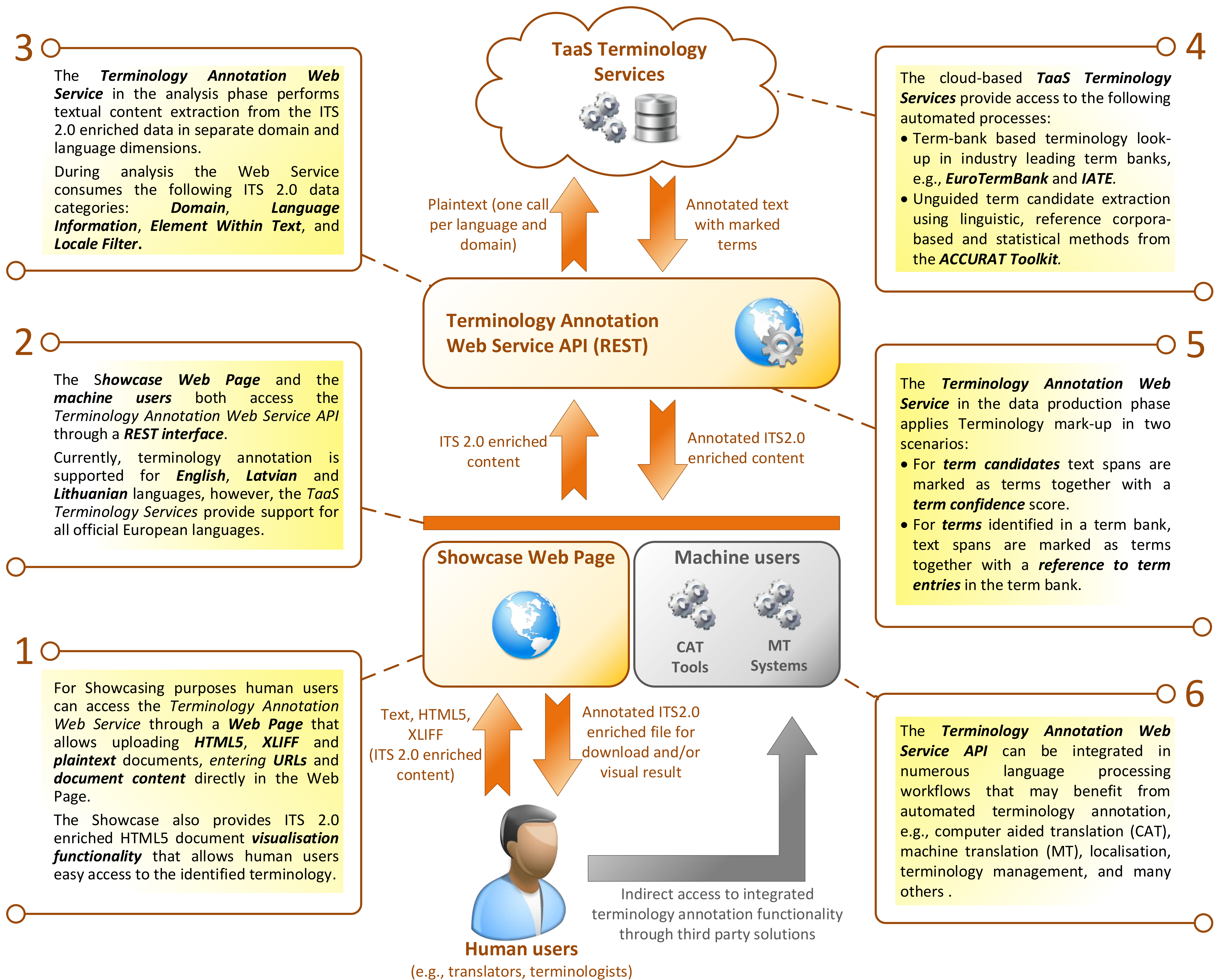


# ITS 2.0 Enriched Terminology Annotation Use Case

<http://taws.tilde.com>

Mārcis Pinnis, Tatiana Gornostay, Pēteris Nikiforovs  
Tilde

The **ITS 2.0 Enriched Terminology Annotation Use Case** allows users (human and machine alike) to automatically annotate term candidates and identify terms in Web content that is enriched with ITS 2.0 metadata in **HTML5**, **XLIFF** and **plaintext** formats. ITS 2.0 content analysis and terminology mark-up are performed by a dedicated **Terminology Annotation Web Service (TAWS) API** that provides an interface to the **TaaS platform's Terminology Services** (offering terminology look-up methods in industry leading term banks as well as state-of-the-art automated term candidate extraction methods). Additionally to the Web service the Showcase Web Page that provides visualisation capabilities for the annotated terminology.

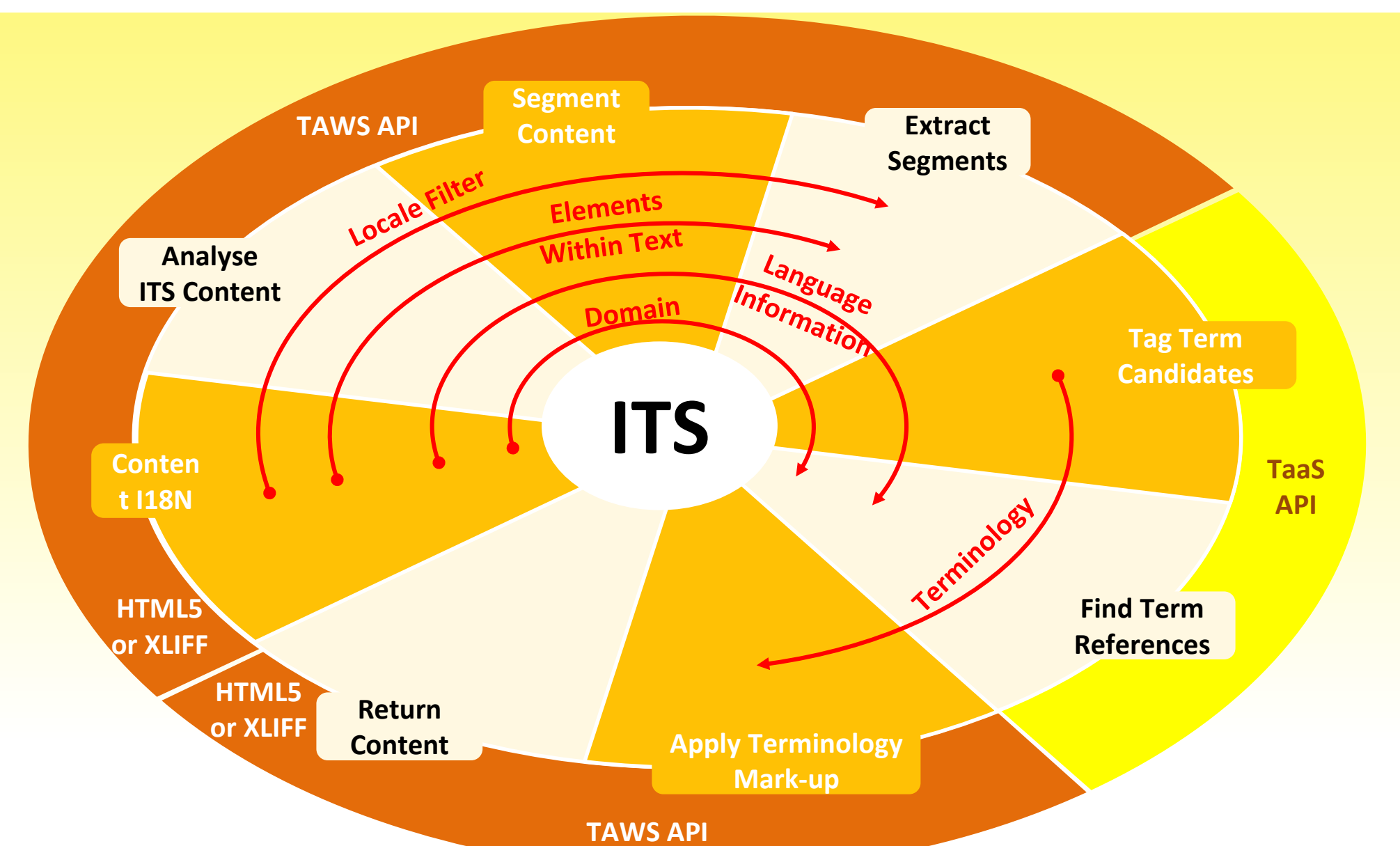


The **ITS 2.0 Enriched Terminology Annotation Use Case** consisting of the **Showcase Web Page** and the underlying **Terminology Annotation Web Service API** have been developed by **Tilde** (<http://www.tilde.eu>). The development is funded by the **MultilingualWeb-LT project** (<http://www.multilingualweb.eu>).



The **Showcase Web Page** is **freely accessible**. The solution including the **Showcase Web Page** and the **Terminology Annotation Web Service API** will be released under the **GPL 3.0 license** at the end of May, 2013.

For more information please contact [tatiana.gornostay@tilde.lv](mailto:tatiana.gornostay@tilde.lv).



## ITS 2.0: The "Dublin Core" of the Multilingual Web

The MultilingualWeb-LT Working Group receives funding by the European Commission (project name LT-Web) through the Seventh Framework Programme (FP7) in the area of Language Technologies. Grant Agreement No. 287815.

