



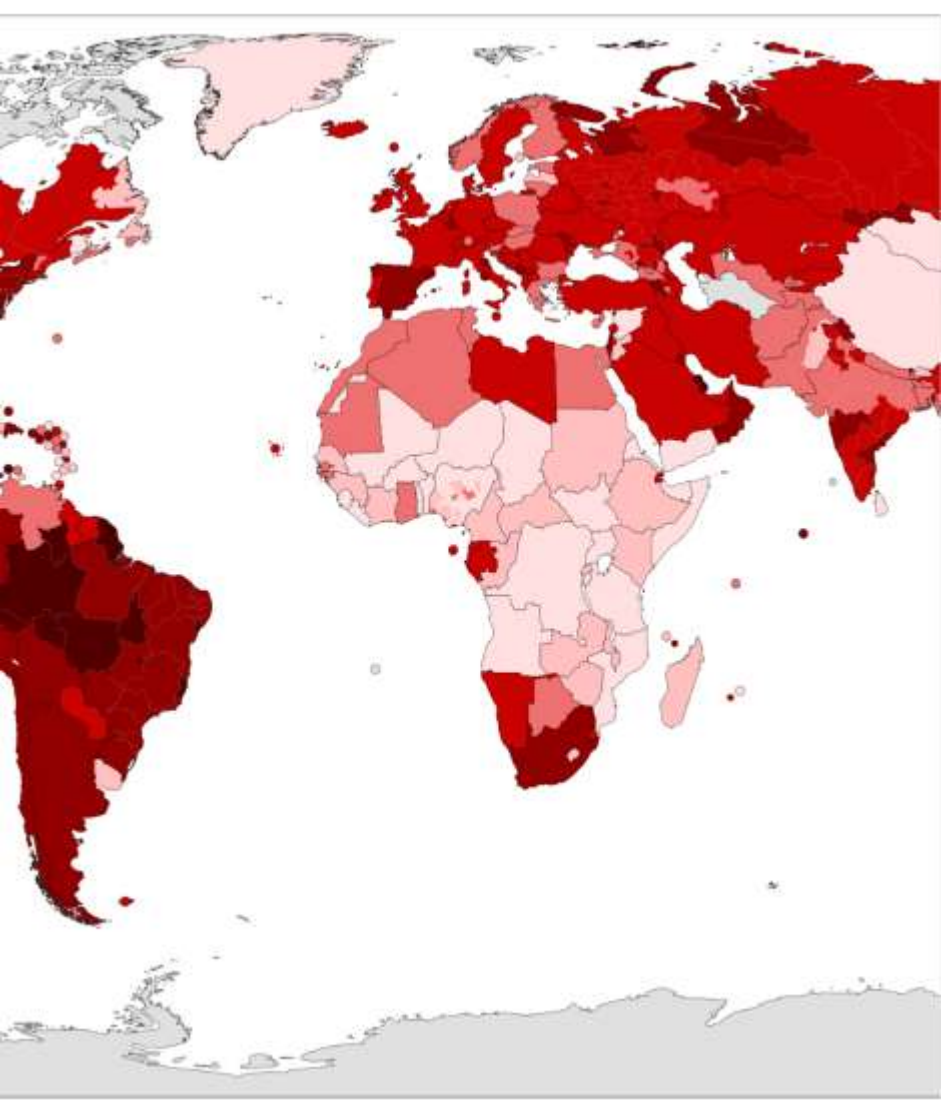
OPEN GEODATA FOR
PLANNING ACTIVITIES

Map Compositions & More..

Introduction by Karel Charvat

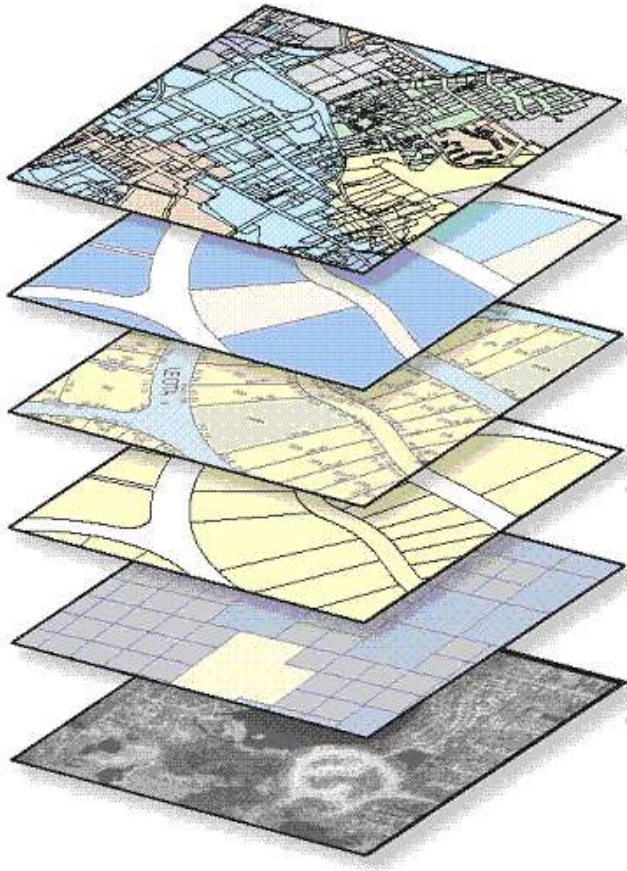


Collaboration and Maps



038982	1	165	18	7512	421	698708	1	6	L17	05	213	14	0	194	1835	81790	64610				
94x	8M2C	165	18	7512	421	698708	1	6	L17	05	213	14	0	194	1835	81790	64610				
37E	P21j	4h	J53	8ebuh	h3M	7Z	Xq	2	2	1	9	9	9	9	9	9	9				
89F	7KD8	4h	465	72M88	g6U8	7pLE3	1	1	1	1	1	1	1	1	1	1	1				
0M	56d	2he	474	1U97e	g982	4511D7P	1	1	1	1	1	1	1	1	1	1	1				
fz	87y	8u8	3dn	49qXJ	5847	5eE93e	1	1	1	1	1	1	1	1	1	1	1				
6	pr-	4n7	Yaf	0GJ44	87na	55v07	2	1	1	1	1	1	1	1	1	1	1				
9j	2-43	4	C5p	8ME	029AK	8M7	8E07	1	1	1	1	1	1	1	1	1	1				
4d	8H7u	t	ew7	885	88540	MT67	437V	1	1	1	1	1	1	1	1	1	1				
00CE	7	7	13edK	7857H	8289	795e	1	1	1	1	1	1	1	1	1	1	1				
6	11r	7	3H8e5P	7Vx	8	155	187h	1	1	1	1	1	1	1	1	1	1				
U	DE18	F	87p6be2	aaa	2	4265	0850	0	0	0	0	0	0	0	0	0	0				
7	5796	qR	Col9E8k	2Lc	F	2900	2x08	6	6	6	6	6	6	6	6	6	6				
7	71.8	03	ay3411c	8080	T	1047	067	4	4	4	4	4	4	4	4	4	4				
4	UraA	Rx	1lgs61a	178u	V	8114	7p3	1	1	1	1	1	1	1	1	1	1				
6	an0f	07	81u08	ab1ey	V	4	1	1	1	1	1	1	1	1	1	1	1				
6	9a2o	4	9X2e	Ju	CA	4	1	1	1	1	1	1	1	1	1	1	1				
4	P466	2	8u77	1AZ	1	1	1	1	1	1	1	1	1	1	1	1	1				
0	3p0c	41	119	Ex71	6	1	1	1	1	1	1	1	1	1	1	1	1				
0	7H8e	IT?	86q	1uK?	4	1	1	1	1	1	1	1	1	1	1	1	1				
1	1Jjh	Dly	9p0	J794	1	1	1	1	1	1	1	1	1	1	1	1	1				
1	8H116	3	78e	r	C2g	1	1	1	1	1	1	1	1	1	1	1	1				
2	25BZE98	d65	66k17	28p7v	379e	1	1	1	1	1	1	1	1	1	1	1	1				
7	78.2	L1	2u6	7uMR2	47.51	15ap	0	0	0	0	0	0	0	0	0	0	0				
0	WU3E2	1w	518w	7u41e	9718a	60ap	UB	6	6	6	6	6	6	6	6	6	6				
1	99278	1	8HD2	8uW74	14:e2	15k8	18	1	1	1	1	1	1	1	1	1	1				
1	318ac3	-X01	1963H	9872e	30e4	h1e2	30e4	9	9	9	9	9	9	9	9	9	9				
1	1.5yoP21	78u	om1n	z2140	1p811	167	5	0	0	0	0	0	0	0	0	0	0				
1	88w4L01	g7e8	08eCA	79280	0Y60	1n	1	1	1	1	1	1	1	1	1	1	1				
0	8Pz5v62	0u0P	7E1C	8NMU2	8AB16	46	5	1	1	1	1	1	1	1	1	1	1				
0	7u826	13cE3a	8u0D0	068M	d5aR45	2	1	1	1	1	1	1	1	1	1	1	1				
13	8u0dZ	121C0t03	8H9e	*09?	52039	0y	4	1	1	1	1	1	1	1	1	1	1				
18	7x1acE	19z2070	00645	u65	150771	7	1	1	1	1	1	1	1	1	1	1	1				
20	00Ck1Vc	Y9u0194	upf7	284	5588E	4	k	6	6	6	6	6	6	6	6	6	6				
20	84uMon6	7L888V	78VZ11	274	hac7-Dy	z	4	4	4	4	4	4	4	4	4	4	4				
2P	<<047V7u7n?	7ye0ALp?	06	06	z267?	8	d	0	0	0	0	0	0	0	0	0	0				
7	4h517cz	zk5y	23u08	1616	08	N	7	7	7	7	7	7	7	7	7	7	7				
7	035e	w97ZK71	KS037	D9340	88	9	0	4	4	4	4	4	4	4	4	4	4				
7	8U15	0	AMU2	2918u	19ac	2F	1	1	1	1	1	1	1	1	1	1	1				
5	384t	463M	e31	C	Du8R	FP	5	3	1	1	1	1	1	1	1	1	1				
7	7e6kX	3171	182	E	RIK	4N	6	0	0	0	0	0	0	0	0	0	0				
87p84E8	511y	29A	388	98	2	8	00	Y1P777	5	6080	JJ	279564	H	1885	P	14	786	71	8C		
JKZU4u4	86cF	38V	K6n	3D	2	8	00	45JN71	2	z	z	z	z	z	z	z	z	z	z		
h0E0889	579?	ouC	huk	1	Z	p	4e017444	10	0937P	u5	80771	1	V491	1	1	1	1	1	1		
6uF7z3c	8G41	J	u74	e	1	0	3E7e951ua	9	7u5u8	7c	0689741	k	S	1r	3	4	8u5	76	7u		
4u58673	J29A	C	8	8	8	8	8	8	8	8	8	8	8	8	8	8	8	8	8		
88ka1	7	8M0C	8	8	8	8	8	8	8	8	8	8	8	8	8	8	8	8	8		
4187	7	8U8e	8	8	8	8	8	8	8	8	8	8	8	8	8	8	8	8	8		
3V143	F	738t	8	8	8	8	8	8	8	8	8	8	8	8	8	8	8	8	8		
ac308	0	35a7	1	6	785ap7	k	F	081MP5	2e8V	2g013	07	u0	87n	4	154	1	g	7	40c3	9	r
u1063	8	50P	1	5	u115	7	8	11e0e0	3eJR	J70P4	57	u4	53	9	663	0	CE	0	h1P78	2	2
4F9k6	8	13D	1	3	7ud9ax	1	6	1e51L	803R	04011	57	3y	7n	9	6n	n	KV	2	P43C8	r	0
9M9G037	259	089P	77hch0	7	81h8e9JH0	ux4R	0C83e	1a	70	J7	6	6	6	6	6	6	6	6	6	6	6
7uX692e	1ea	2e6P	8*075	J	Rho27	57	emV	F47?	23	7r	47	u	u	u	u	u	u	u	u	u	u
81u37U	*83	85k	6ck4Cv	u	1ugekn18	d7v	u	u	u	u	u	u	u	u	u	u	u	u	u	u	u
26u\FZ3	d1L	atg	7u8719	y	56577u84	u	K	1nj	nf	2	66	81a	3	J7x	+40g	9	271R7M81	1	1	1	1
77	8uM1	19U	61a	Y576S7	3	175	0927	8E	z	6	02	d	13	867	:C	777hV882	6	146CL02	3UR	4	1
R3H	52ju	475	yp0	5C0411	e	07	Ju8h	0g	8	p	Mi	6	R3	00	S	z76	43e	0	K83145	u4P9	1
g4uafE8b	e	P	89u	0u6U75	E	7V	264u	VM	4a0	88	2	08	07	J	8h1	13K3	6	146CL02	3UR	4	1
51p57oel	805	y75	o4Jc37	C	e70	1a6Z	e7E	ZH7	42	y	48	10	e	8R8	88A3	7	1104	4u0P1	1	1	1
85375<e1	480	Z8C	u07U	IN	Q746	1861	1	M	quJ	y	87	10	C	T9H	0845	C	851J	re010	1	1	1
727u8MCR	1eZ	910	n-09	831	77712	F8e	F	X	176	7C	K42	DF	8	51L	34R4	6	841	6u7E5	1	1	1

Why all this fuzz about “maps”?



Web Map Context

OGC Standards

OGC OWS Context

An Open Format Linking Geospatial Web Services and Information

The OGC Web Services Context Document (OWS Context) was created to allow a set of geospatial information resources (services) well to be passed between operators primarily as a collection of services.

context

Implementations

Sample Data

Implementation Guide

Issue Tracker

Mailing List

FAQ

Standard

OGC OWS Context Conceptual Model

- This standard describes the use cases, requirements and conceptual model for the OWS Context according to standard.
- The goal of this standard is to provide a model, which is presented and described via defined expressions to the Members & related documents, specifying a fully configured service based on a consistent interpretation among clients supporting the standard.

OGC OWS Context Map Encoding Standard

- This standard describes the Map encoding OWS Context provides a definition of how to encode a context document in the Map encoding OWS Context.

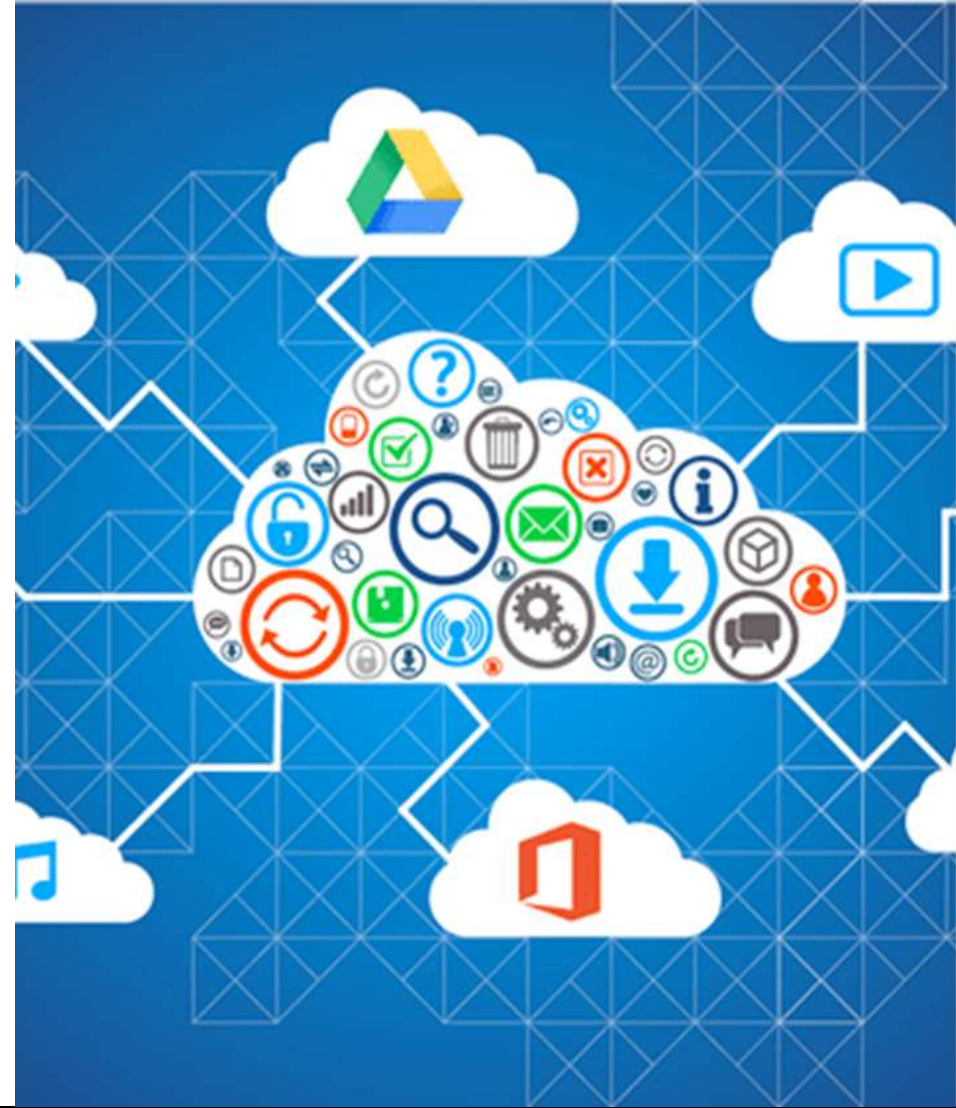
HTML

CSS

JS

json

What are Map Compositions?



Why Map Compositions?



What is a Map Whiteboard?



What can Map Whiteboards do?

Attend our breakout session on Collaborative Map Making



Karel Charvat



Raitis Berzins



(Stein) Runar Bergheim