



Royal Netherlands Meteorological Institute
Ministry of Infrastructure and the Environment



Science & Technology
Facilities Council



ASTRIUM
AN EADS COMPANY



Deutscher Wetterdienst
Wetter und Klima aus einer Hand



Open Annotation in The **CHARMe** Project



workshop on Open Annotation

San Francisco - 2nd April 2014

Raquel Alegre

Scientific S/W Engineer
University of Reading, UK

Summary

- Introduction to **CHARMe**
 - What's a **climate dataset**?
- Use of **Open Annotation** in **CHARMe**
 - **CHARMe**'s basic use case
 - Advanced tools
- Conclusions



Introduction to CHARMe

Metadata discovered
or generated by users

Post-fact annotations

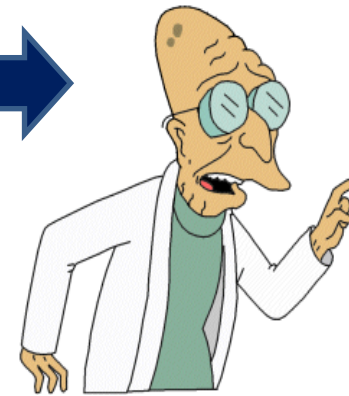
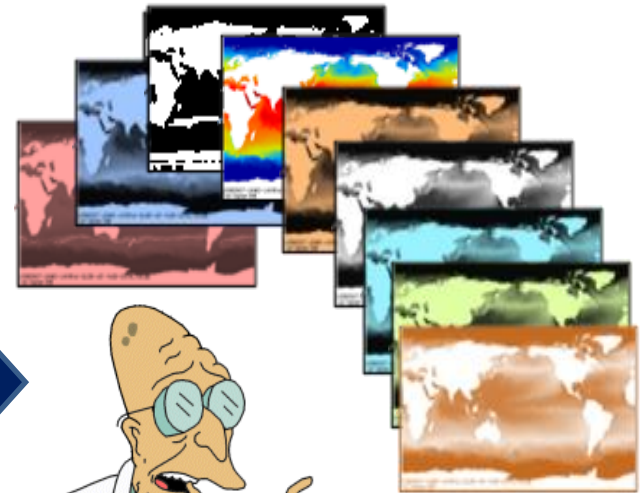
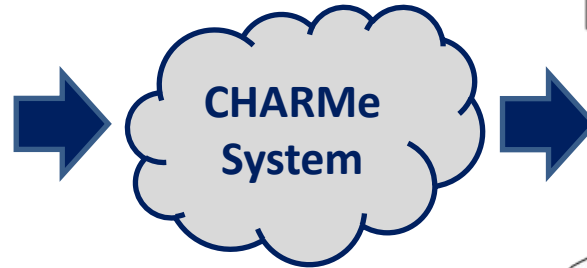
External events

Data Provenance

User feedback

Data policy

Results of assessments



www.comedycentral.com

?!

Introduction to CHARMe

Metadata discovered
or generated by users

Post-fact annotations

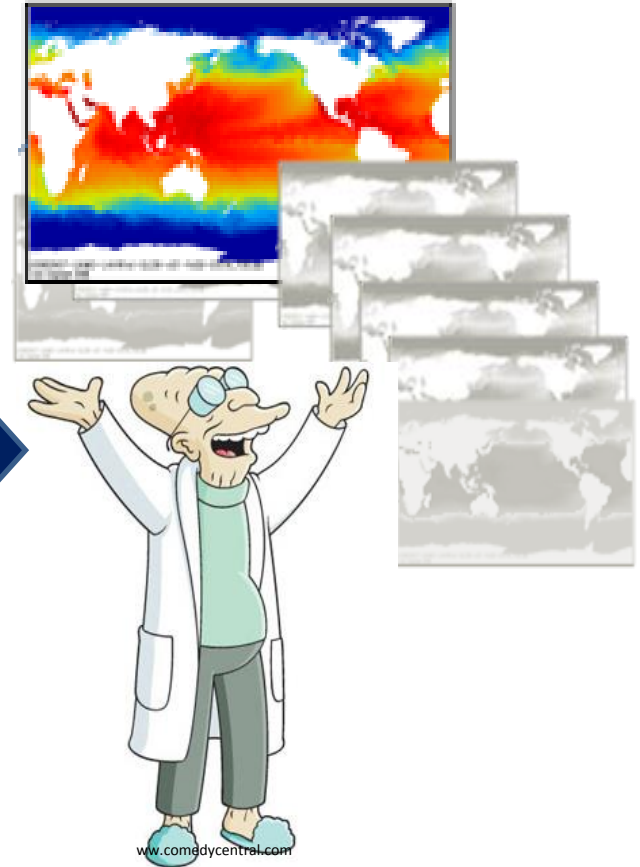
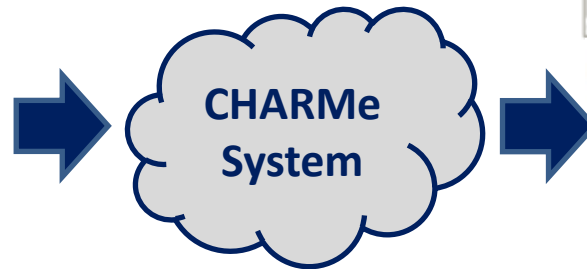
External events

Data Provenance

User feedback

Data policy

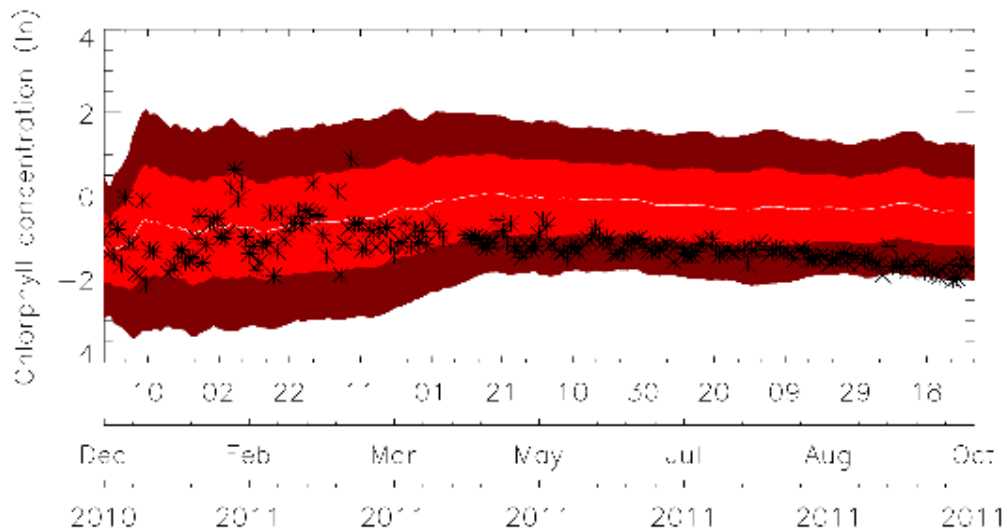
Results of assessments



Sharing knowledge about **Climate Data** to help users **judge fitness-for-purpose**

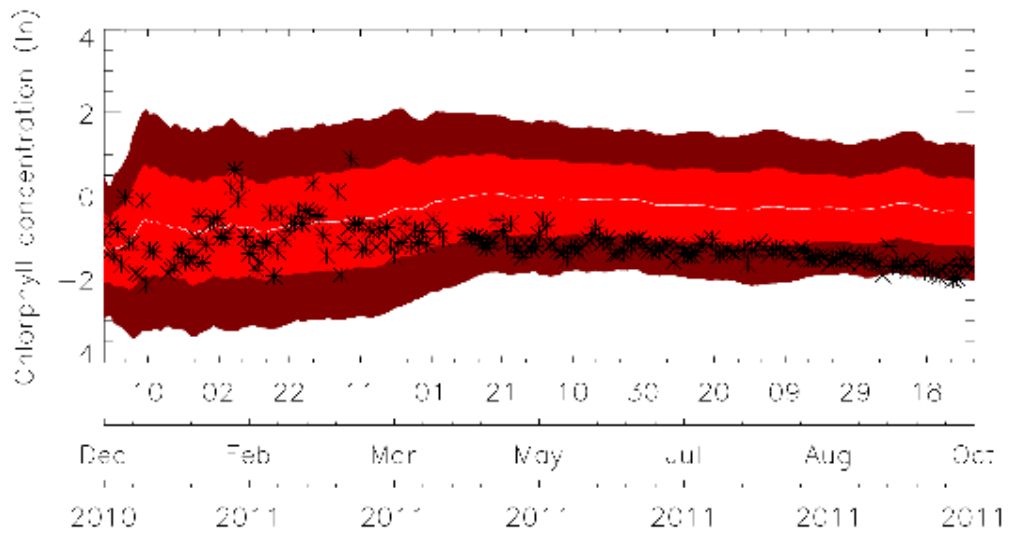
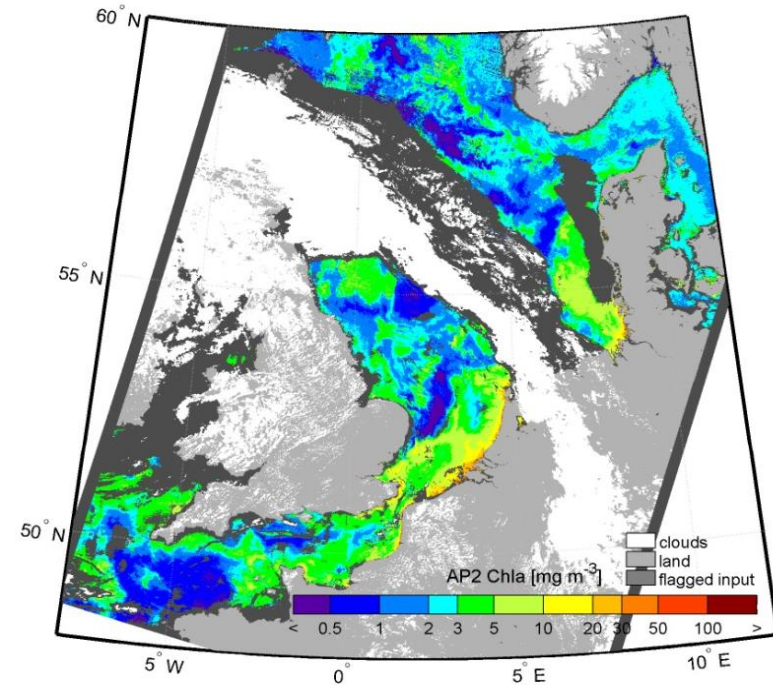
What's a Climate Dataset?

Measurement	< 1999	1999	2000	2001	2002	2003	2004	2005	2006	2007	2008	2009	2010	2011	2012	2013	2014
HPLC																	
PABS																	
CDOM																	
SPM																	
POC - CHN																	
Chla(fluoro)																	
Primary production																	
FRRF																	
Ed, Lu																	
ac9																	
bb6																	
VSF,bb3																	
Above water RSR																	
PAR																	
Transmissometer																	
Flow cytometry																	
Coulter Counter																	
Phytoplankton counts																	
CTD																	



What's a Climate Dataset?

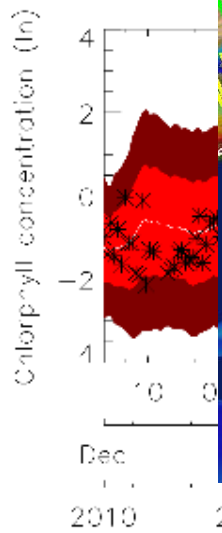
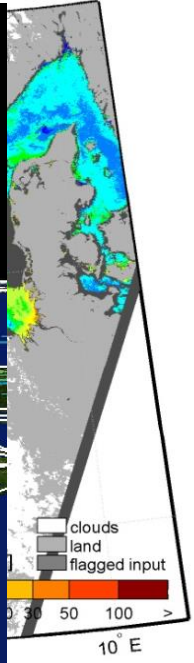
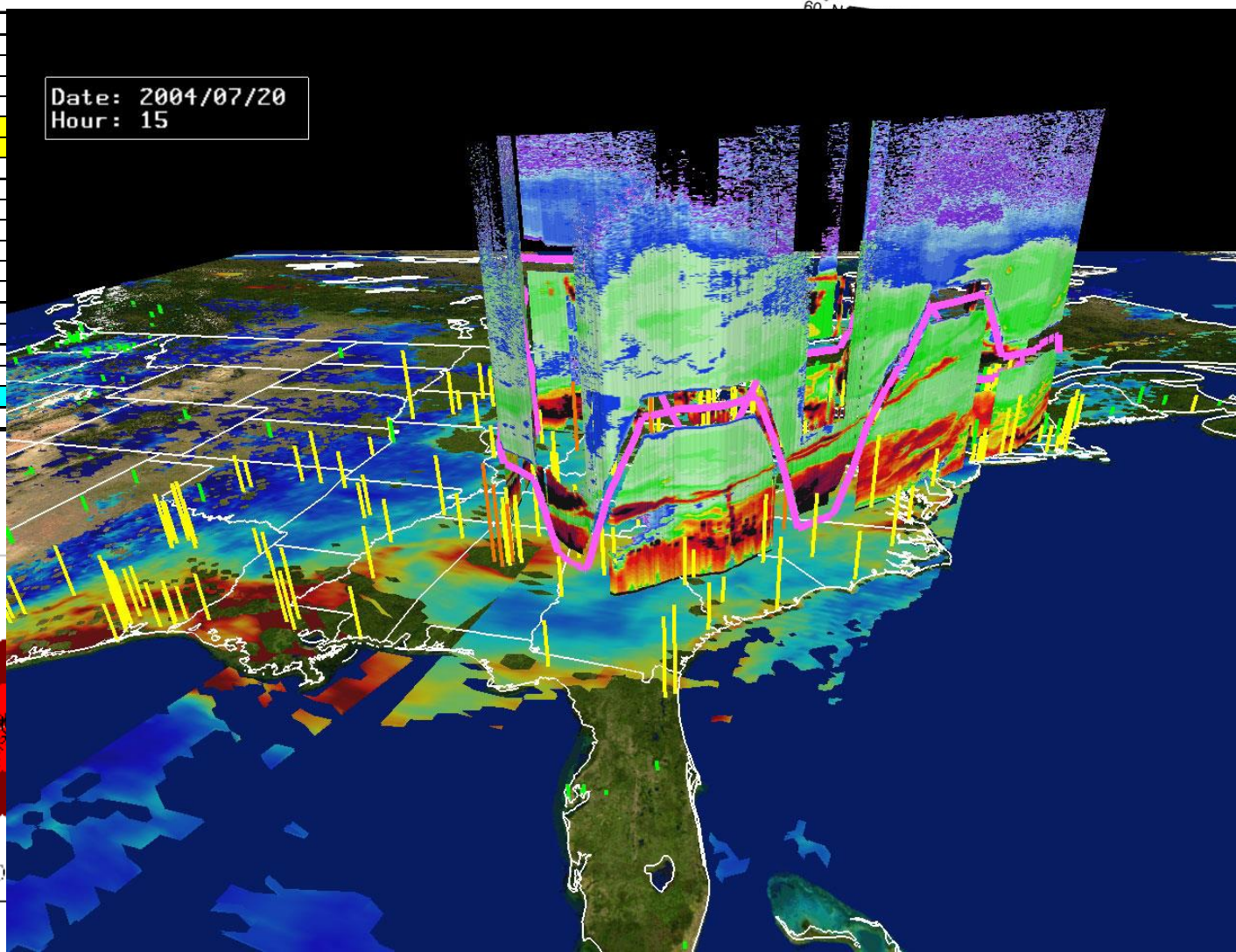
Measurement	< 1999	1999	2000	2001	2002	2003	2004	2005	2006	2007	2008
HPLC											
PABS											
CDOM											
SPM											
POC - CHN											
Chla(fluoro)											
Primary production											
FRRF											
Ed, Lu											
ac9											
bb6											
VSF,bb3											
Above water RSR											
PAR											
Transmissometer											
Flow cytometry											
Coulter Counter											
Phytoplankton counts											
CTD											



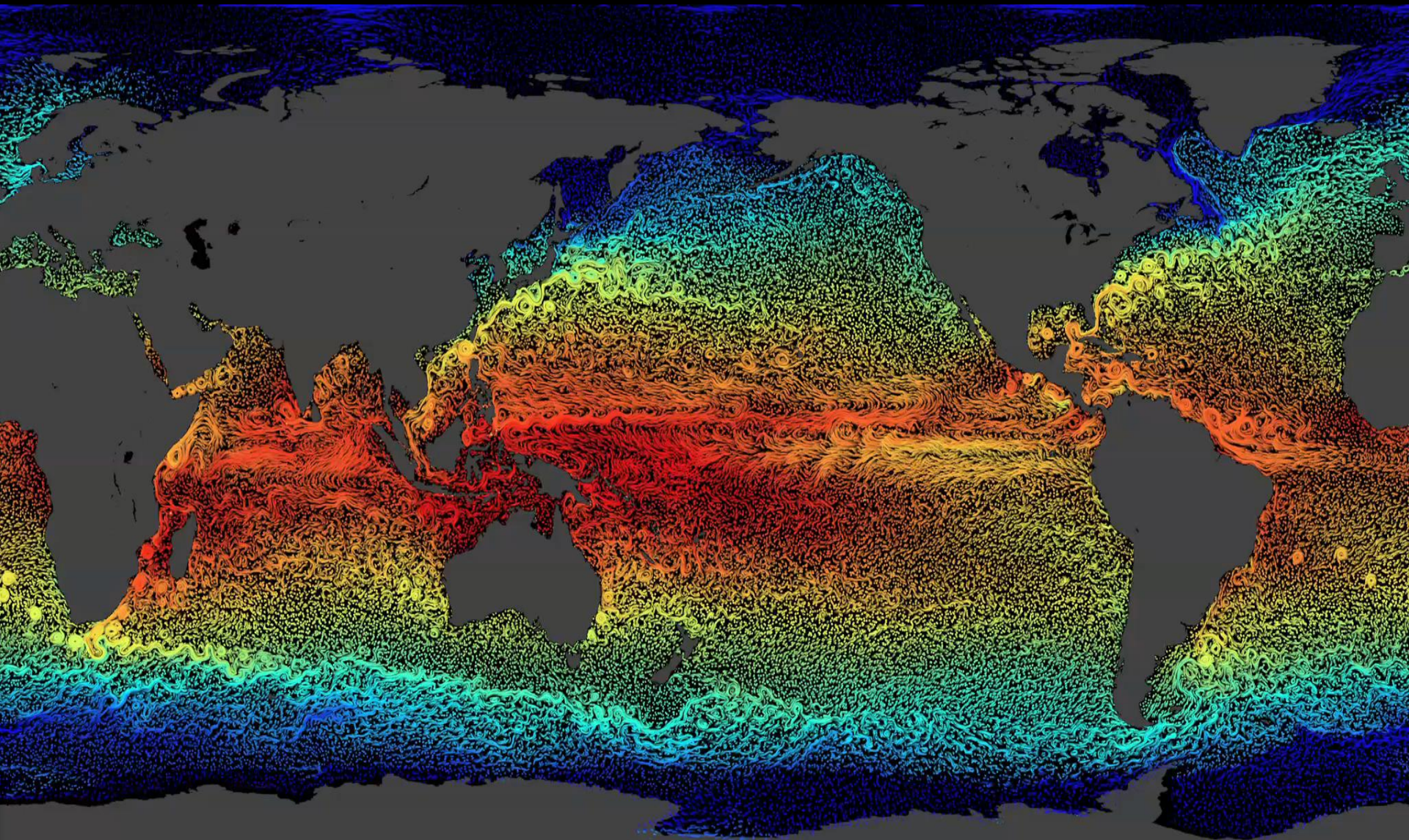
What's a Climate Dataset?

Measurement	< 1999
HPLC	
PABS	
CDOM	
SPM	
POC - CHN	
Chla(fluoro)	
Primary production	
FRRF	
Ed, Lu	
ac9	
bb6	
VSF,bb3	
Above water RSR	
PAR	
Transmissometer	
Flow cytometry	
Coulter Counter	
Phytoplankton counts	
CTD	

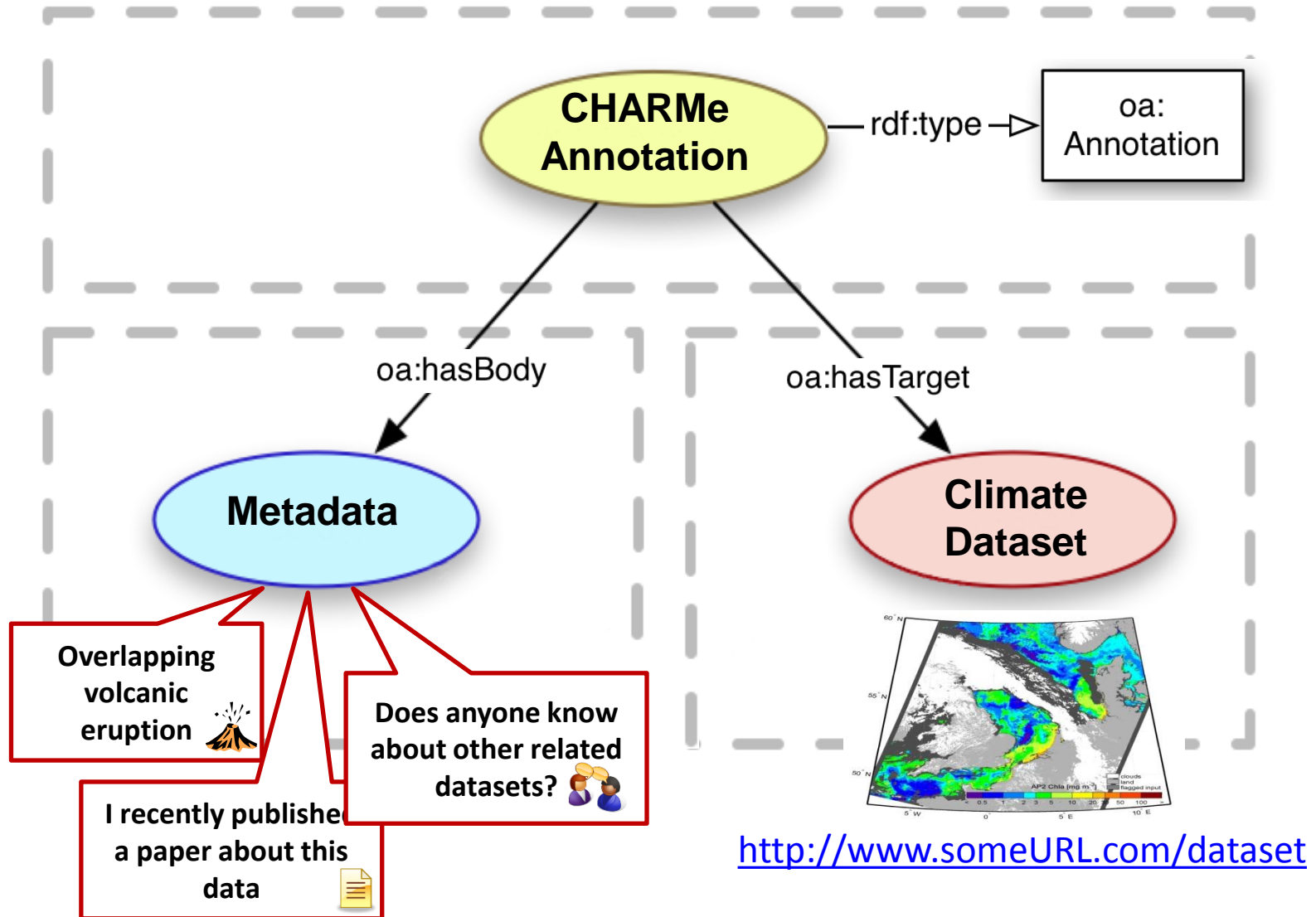
Date: 2004/07/20
Hour: 15



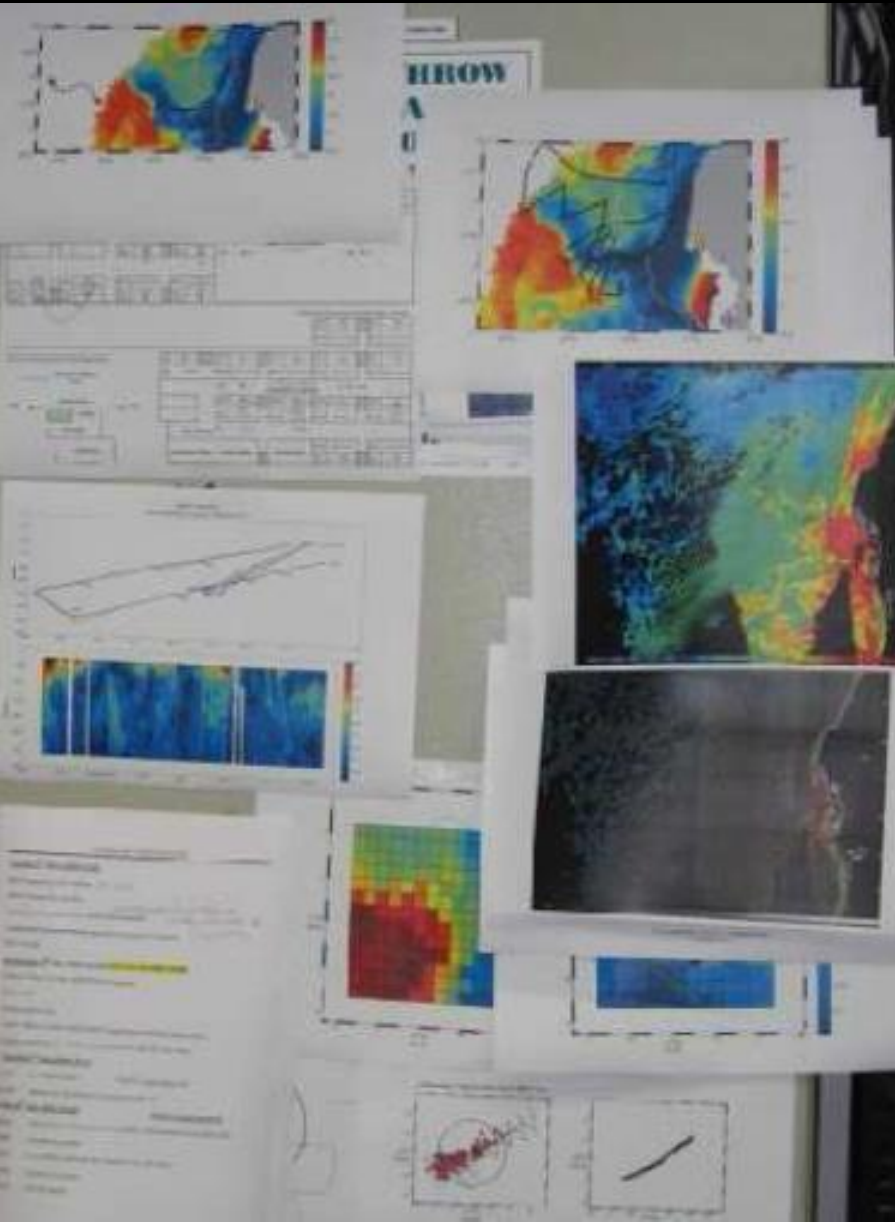
What's a Climate Dataset?



CHARMe basic OA use case



Some advanced use cases...



Climate data users
discuss data:

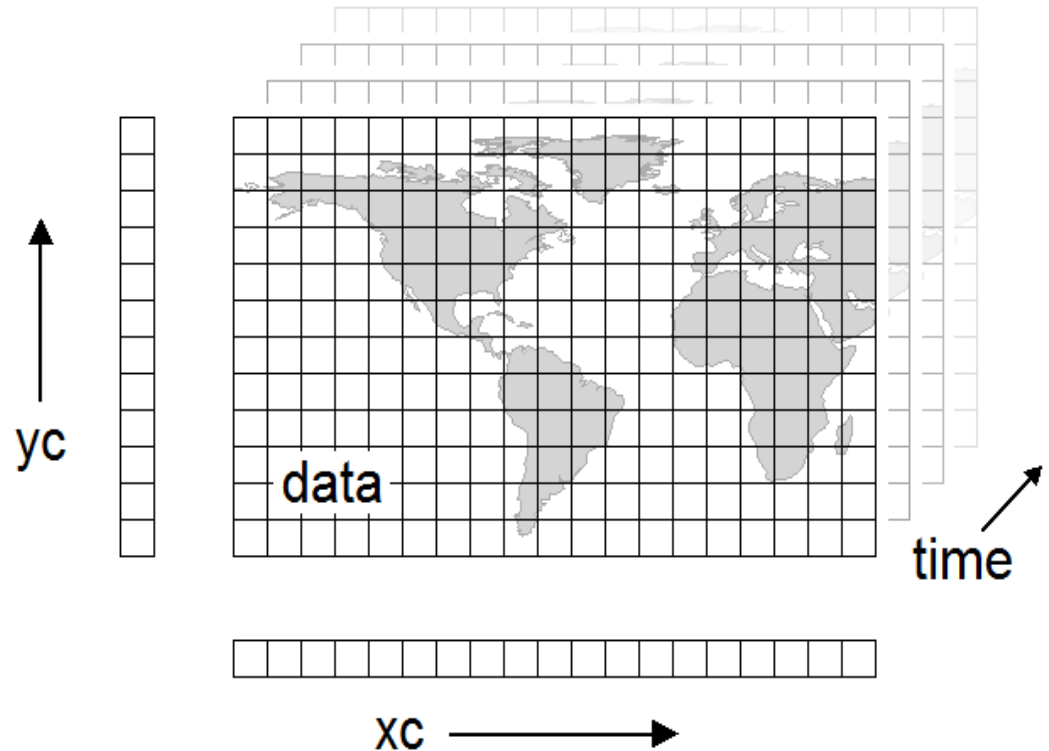
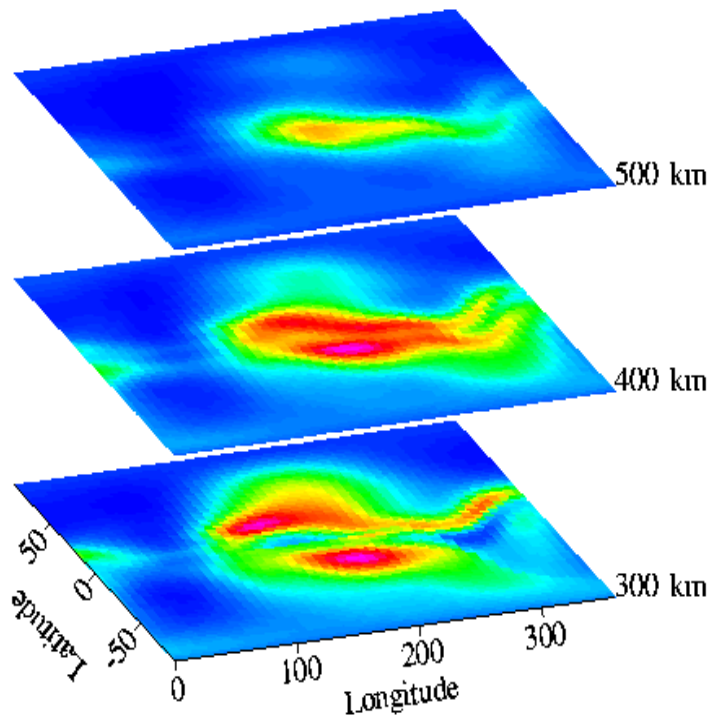
- Research on events **timing**
- Focus on **specific areas** of the world
- **Intercompare** datasets

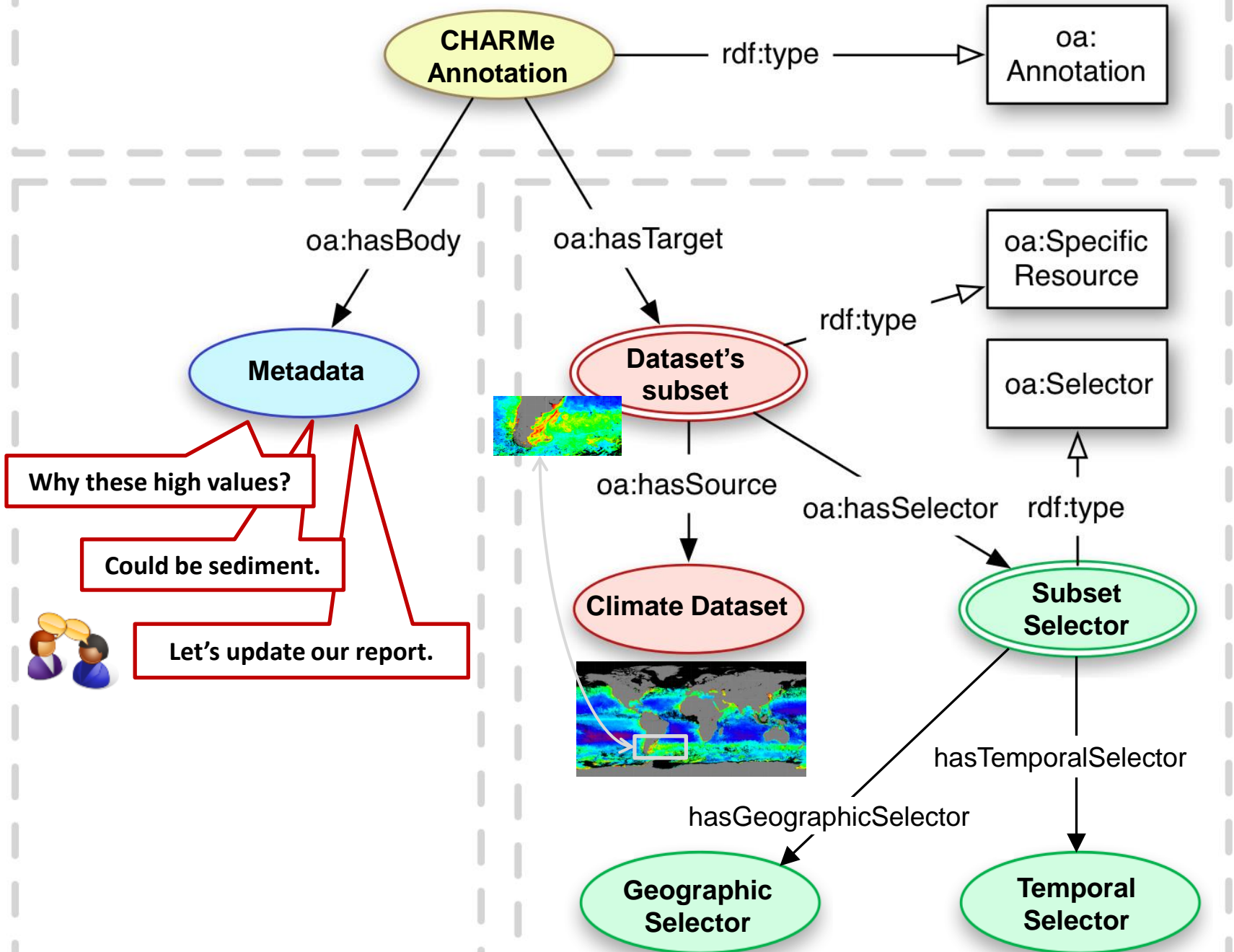
CHARMe advanced use cases

Climate data often comes in 2D, 3D and 4D formats

How to refer to a specific subset of these?

OA SVG Selectors are not enough...





Conclusions

CHARMe is all about **Climate Data**, but its use cases are also applicable to **many other fields**.

Previous efforts have been made to annotate subsets of data (**MapHub**, **Strabon**, ...).

Linked GeoSpatial Data and **OGC** working together tackling similar problems.

However...

...there is not a standardized way of doing this yet.



obrigado

Dank U

Merci

mahalo

Köszí

спасибо

Grazie

Thank
you

mawruuru

Takk

Gracias

Dziękuję

Děkuju

danke

Kiitos