

## Company Level Environmental Accounting, Reporting and Information



# Linking & Integrating Environmental Data in Europe

Christopher Baldock  
CLEAR Info, Action 3.6 Project Manager

# Introduction

---

Linking and integrating company-level and geo-spatial environmental data at a *parent company, subsidiary* and *site-level* so that it can be aggregated and is useful in policy and decision-making for regulators, investors and companies.

## Linking

Taking the same type of company-level environmental data from around the EU

## Integrating

Using geo-spatial datasets of different formats so that they provide an extra layer of information

## Environment Agency

Stores information on:

- i. 170,000 sites, 35,000 parent companies and 1,300 listed companies

Data contained in the CUBE includes company and regulatory data, such as:

- i. Waste production
- ii. Emissions
- iii. Permit breaches
- iv. Water abstraction

## Challenges

- i. Data – regional variations in data collection methods, systems used, permitting conditions, joint permitting
- ii. Company identity – may have changed since the permit was issued, identifying primary keys, formatting of permits

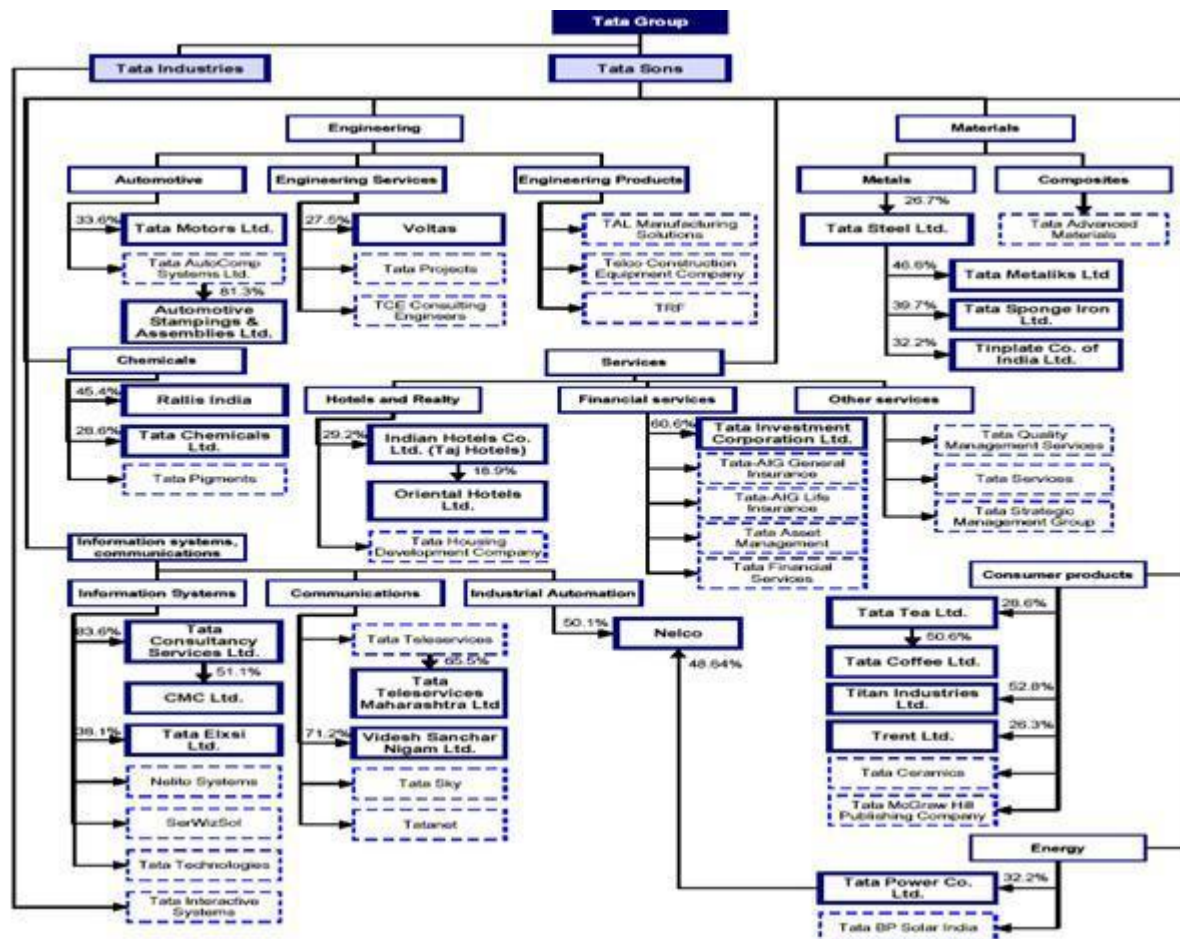
# Example Company – Tata Group

Company-level data

*Multi-national*

7 industries

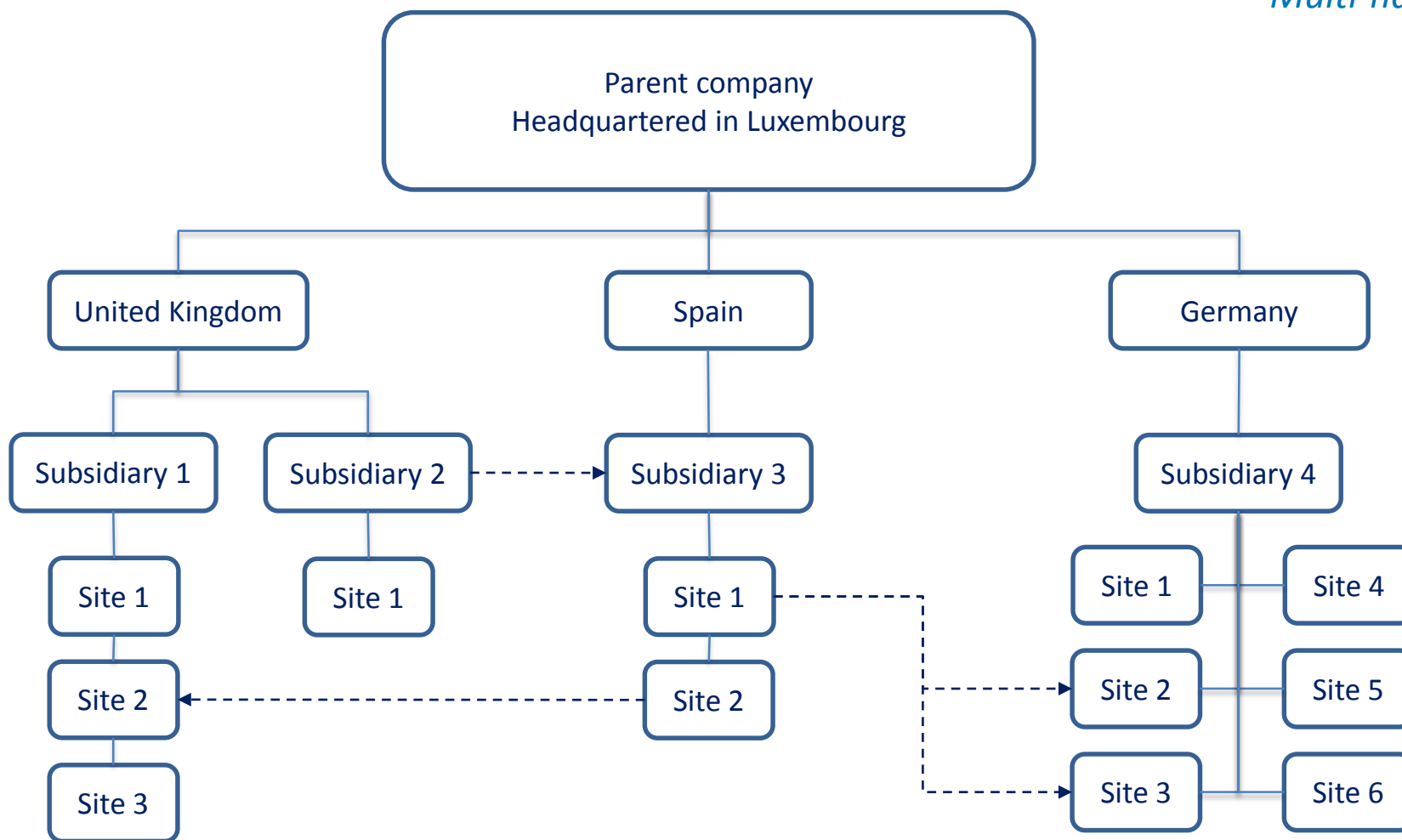
- i. Engineering
- ii. Materials
- iii. Consumer Products
- iv. Services
- v. Chemicals
- vi. Information Systems
- vii. Energy



# Example Company

Company-level data

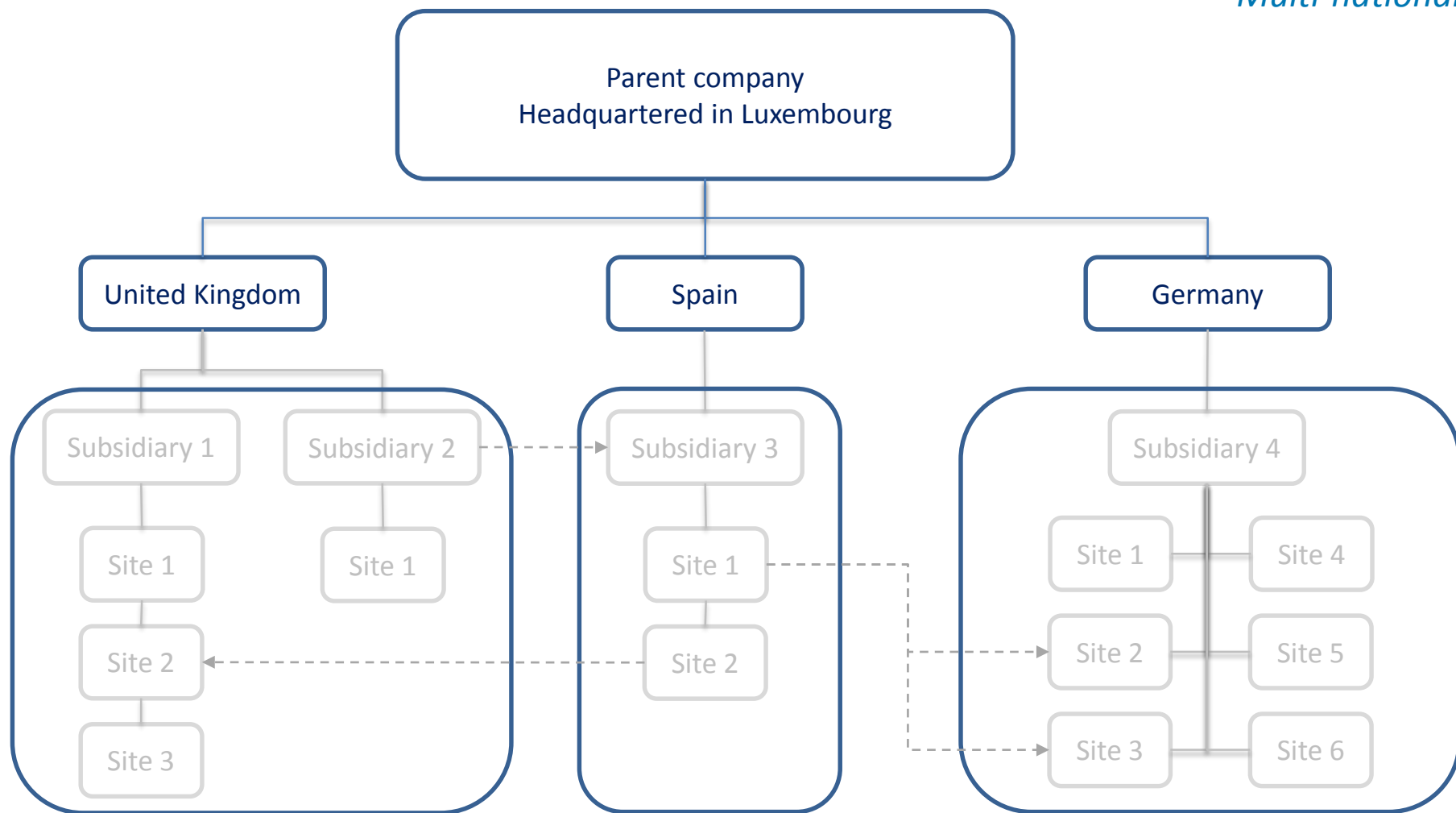
*Multi-national*



# Next Steps

Company-level data

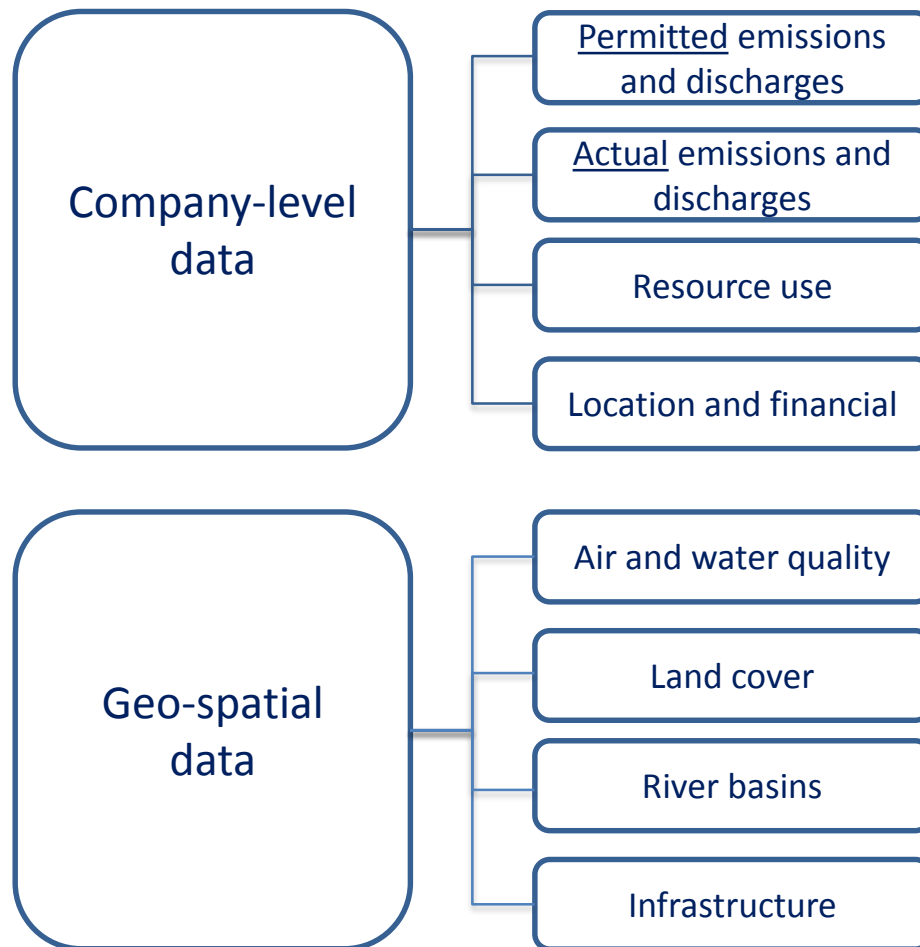
*Multi-national*



# Next Steps

## Company-level & geo-spatial data

*Multi-national*

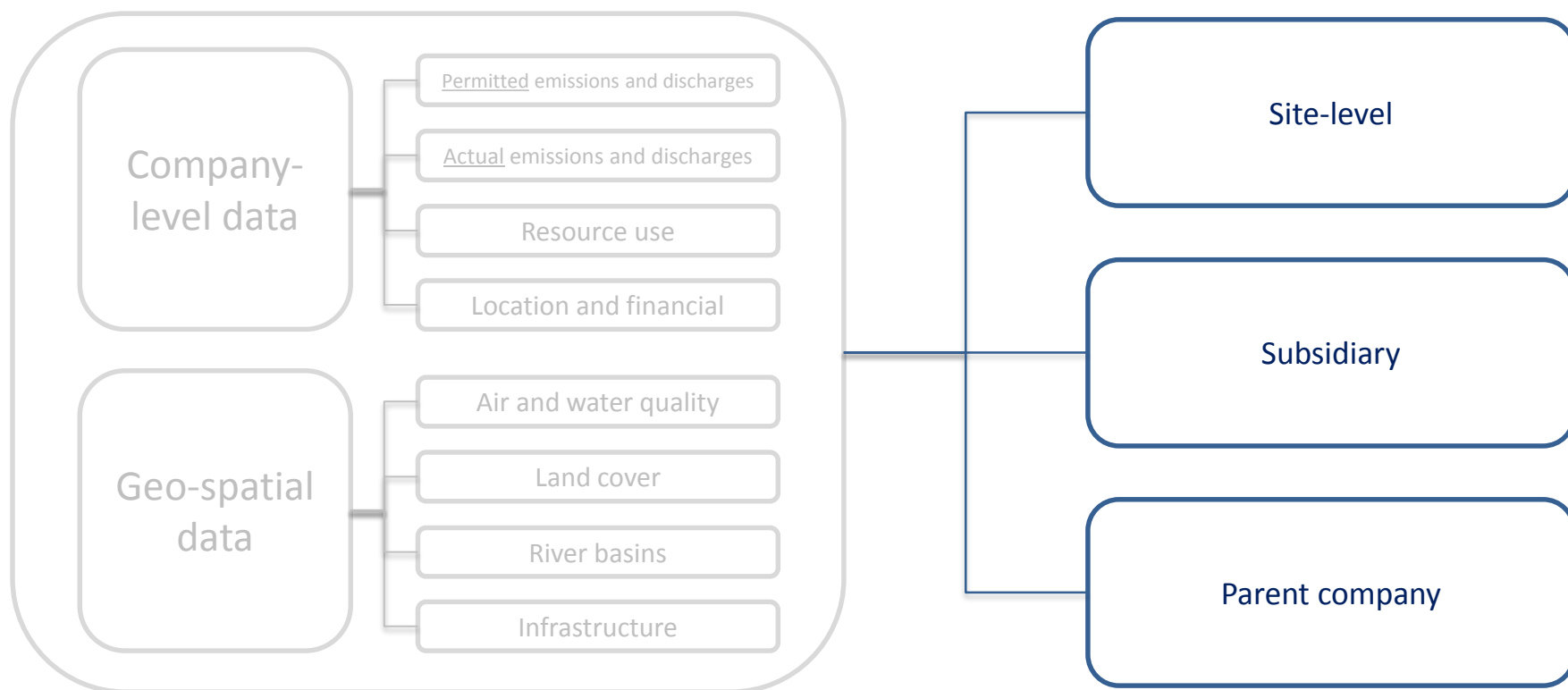




# Next Steps

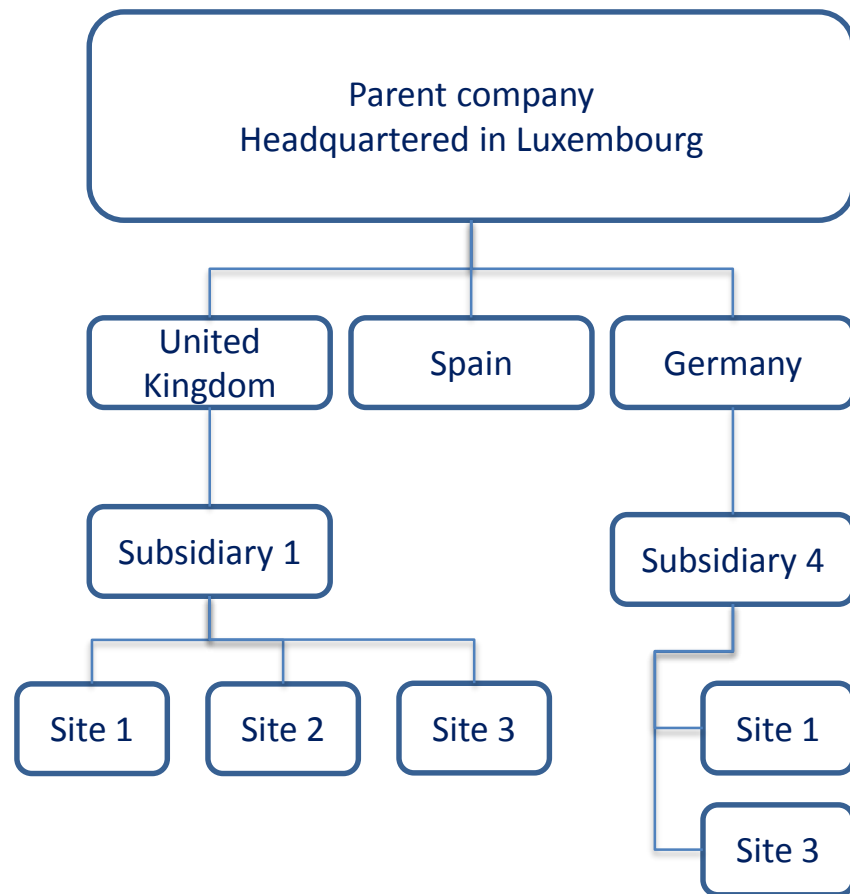
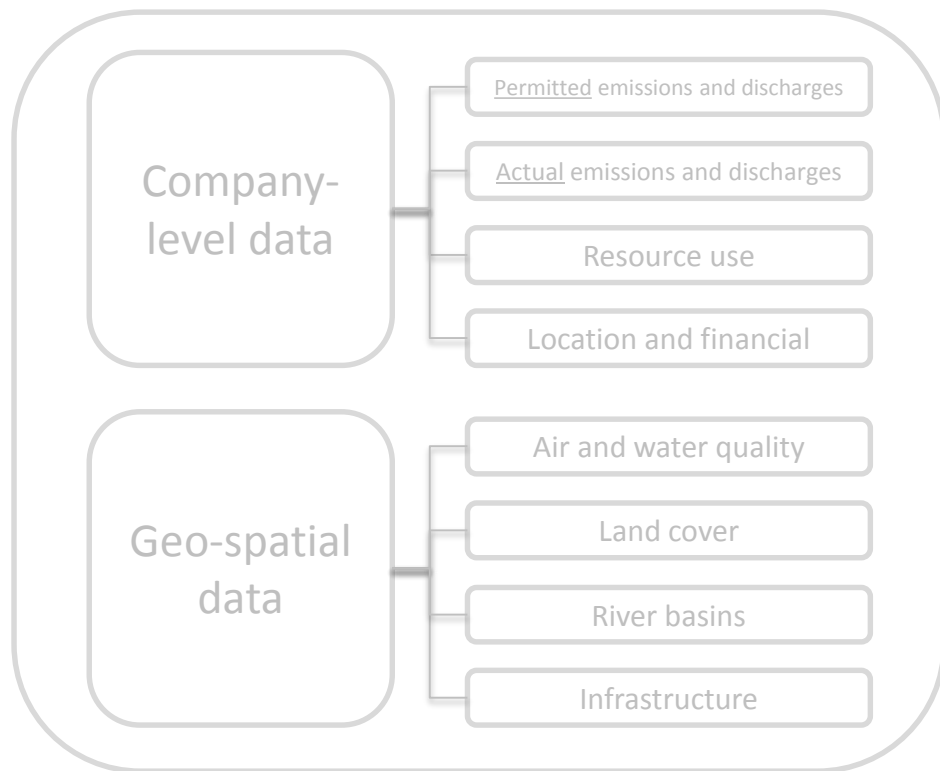
Company-level & geo-spatial data

*Multi-national*



# Next Steps

## Company-level & geo-spatial data



# Example Output

## Company-level & geo-spatial data

Inter- and intra-company comparisons at:

### Site-Level

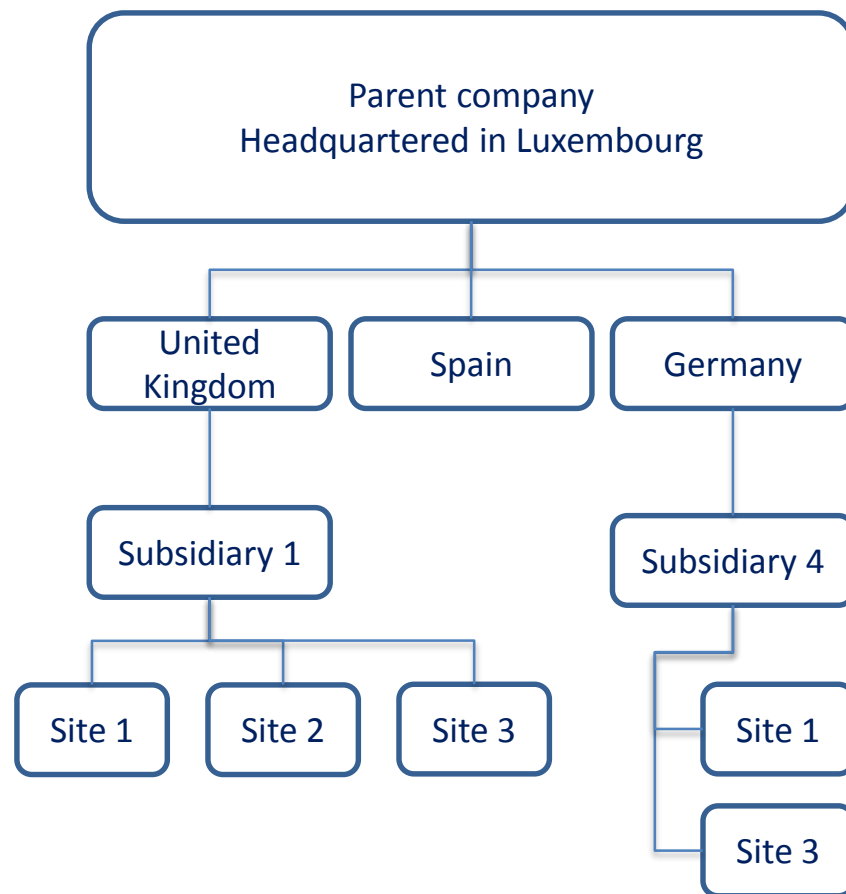
- i. Compare the number, severity and cost of environmental breaches
- ii. Assess local impacts and dependencies on aspects such as water quality

### Subsidiary

- i. Compare company environmental performance across various regulatory regimes

### Parent Company

- i. Gain visibility of total environmental performance



# Challenges

---

- i. Matching companies and sites across datasets
  - i. Company name issues
    - i. Name changes
    - ii. Name spellings
  - ii. Use of unique identifiers – D&B number, permit number...
- ii. Permit data
  - i. Free text – mass download difficult
  - ii. Issued in the 1960s
  - iii. Issued and managed at different levels
  - iv. Different information contained in permits
- iii. Filling in the gaps
  - i. Attaining revenue or production data for each site (and type of site)
- iv. Data sources
  - i. Regulatory and company data, data sharing, confidentiality

# CLEAR Info partners

