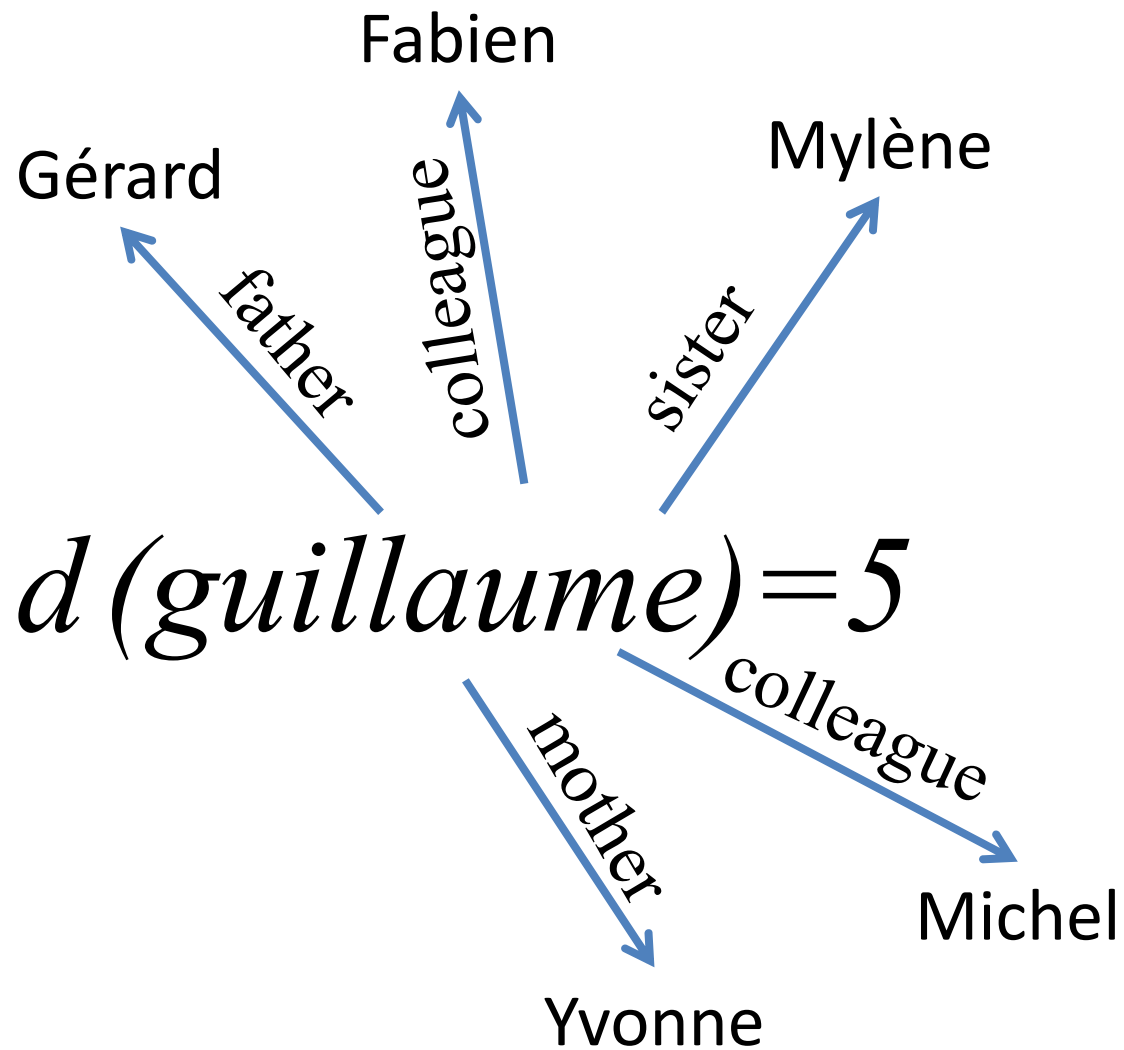
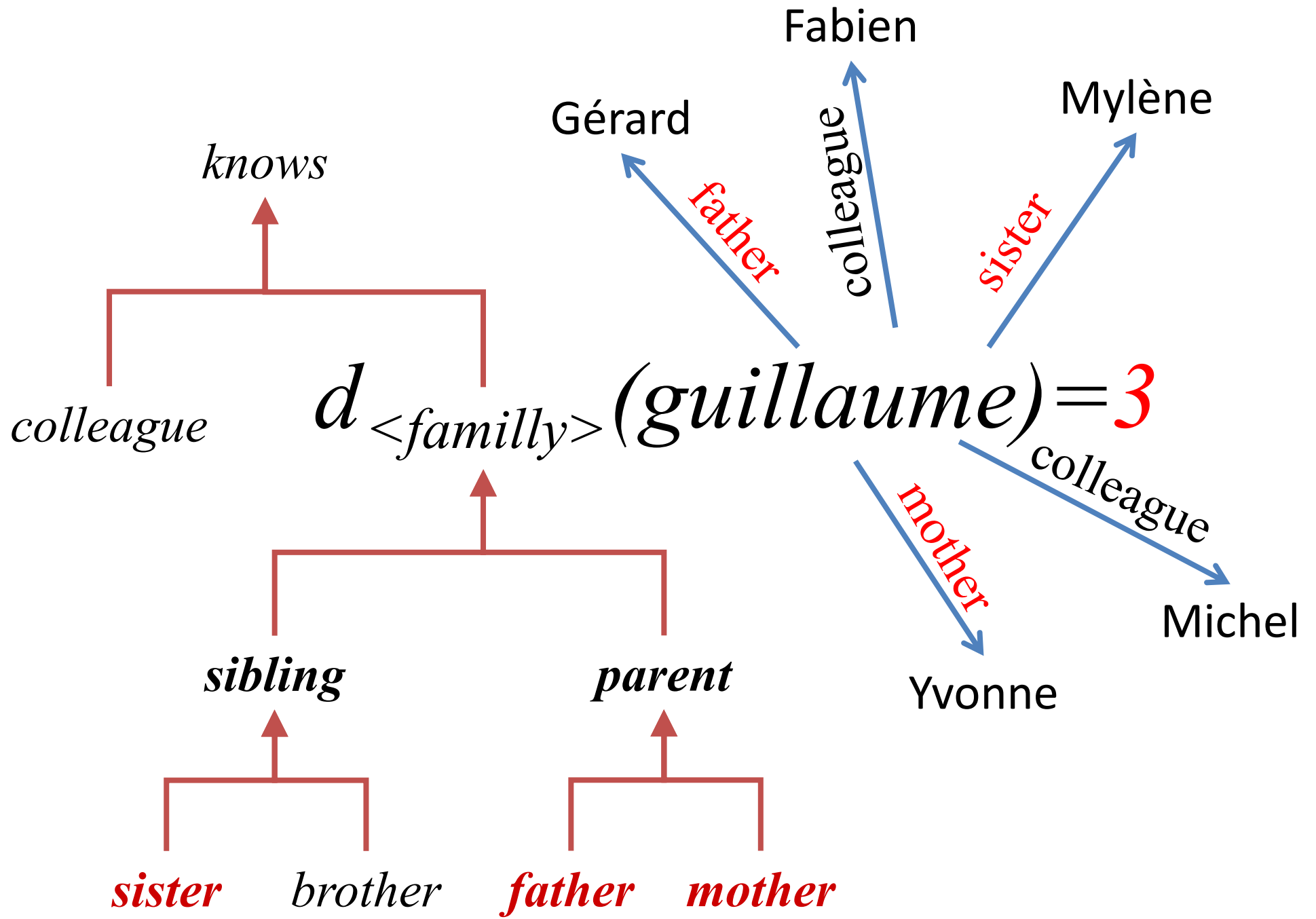


betweenness centrality reveals brokers
« A place for good ideas » [Burt 1992] [Burt 2004]



sociograms and analysis





social data

SemSNA Ontology

**FOAF, RELATIONSHIP, SIOC,
DC, SKOS, SCOT, DOAP, MOAT**

**Domain
Ontologies**

RDF/S, OWL

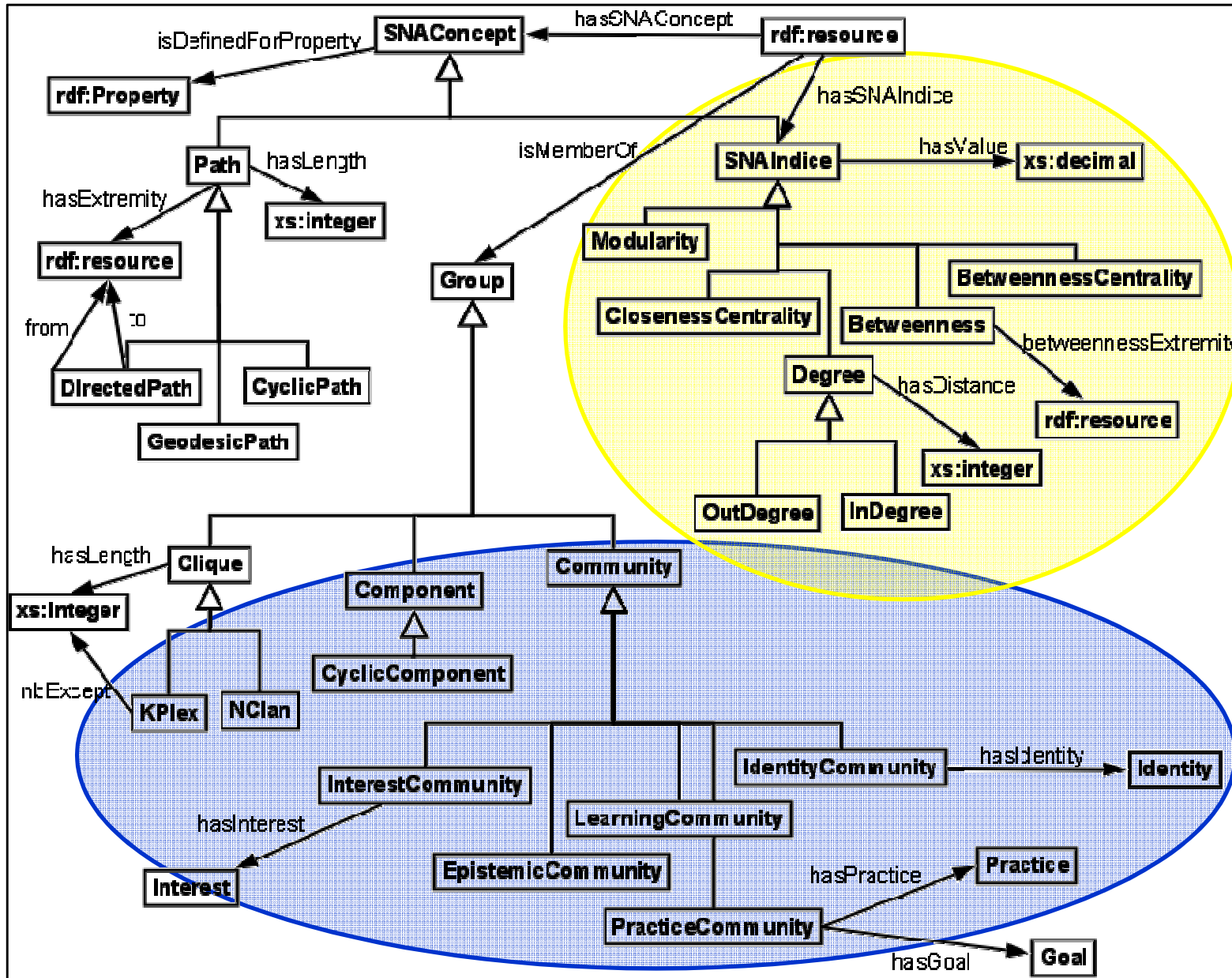
RDFa

GRDDL

Wrappers & web 2.0 APIs

XML

μformats



SemSNA ontology

SPARQL + Extensions

social data

SemSNA Ontology

**FOAF, RELATIONSHIP, SIOC,
DC, SKOS, SCOT, DOAP, MOAT**

**Domain
Ontologies**

RDF/S, OWL

RDFa

GRDDL

Wrappers & web 2.0 APIs

XML

μformats

D-in<*type*, *length*>(y) :=

```
select ?y count(?x) as ?degreeCentrality where {  
  ?x $path ?y  
  filter(match($path, star(param[type])))  
  filter(pathLength($path) <= param[length])  
} group by ?y
```


Semantic Social Network Analysis

SPARQL + Extensions

social data

SemSNA Ontology

**FOAF, RELATIONSHIP, SIOC,
DC, SKOS, SCOT, DOAP, MOAT**

**Domain
Ontologies**

RDF/S, OWL

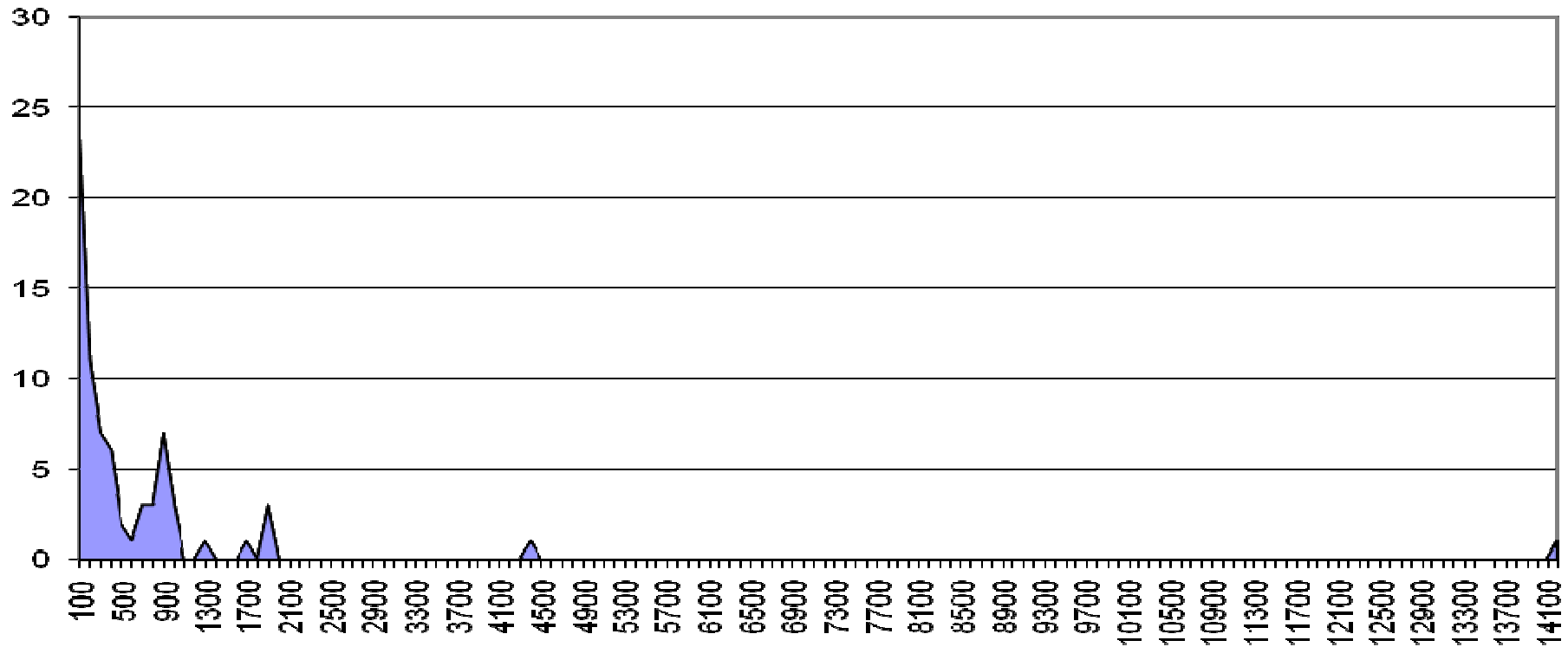
RDFa

GRDDL

Wrappers & web 2.0 APIs

XML

μformats



long tail distribution of the betweenness centralities

50 000 projections on 2020 FOAF profiles extracted from flickr.com [Freeman, 1979]

Research contract with a Web 2.0 company : 10 000 profiles, 600 000 relations, 1.4 Go RDF in main memory using CORESE



- **enterprise social networking**
- **business intelligence, watching, monitoring**
- **communities of interest, of practice, of experts**

isicil.inria.fr

a point made
at the linked data workshop 2009...



unifying identities
integration & consolidation of data





Fabien

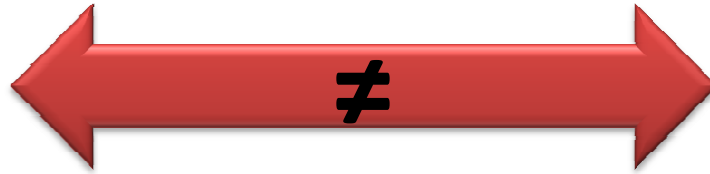


Bafien



Magic
Hagrid

owl:differentFrom



Semantic
Hagrid

