

Mobile Web Initiative

Application: M-Health



Session Chair

Michael F. Maltese

Legatum Center for Development & Entrepreneurship

Massachusetts Institute of Technology

Boston, MA USA

What is M-Health?

the provision of health-related services via mobile communications



Credit: DataDyne

M-Health 'Breakthrough'

Mobile phones can do it all: train community health workers; connect them to the clinics; make possible an emergency response system; report disease outbreaks; monitor aid flows; provide telemedicine; and much more.

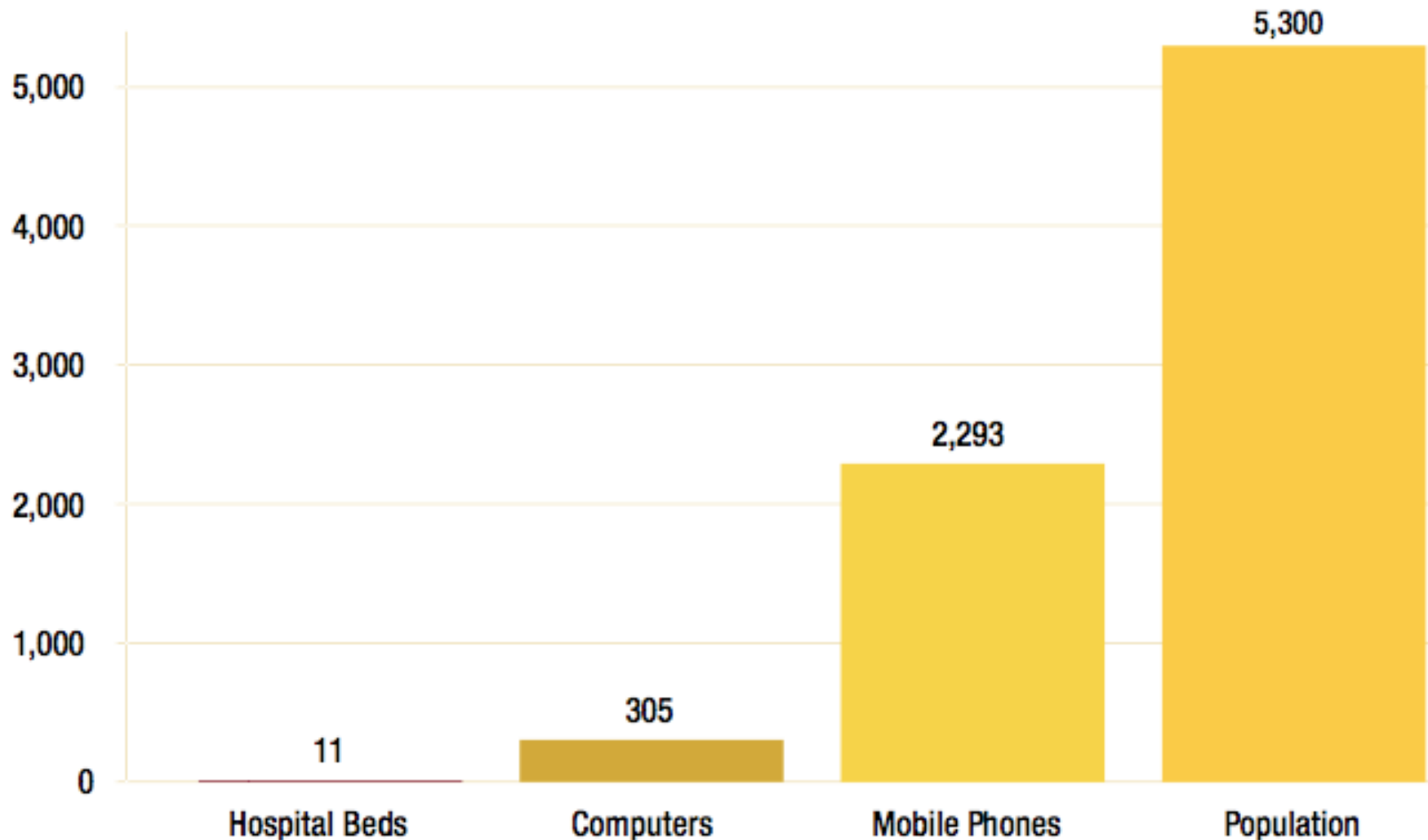
With the advent of third-generation mobile telephony, offering broadband wireless connectivity even to the most remote villages of the world, the opportunities for highly connected, information-rich health systems in poor rural areas is moving from dream to reality.

JEFFREY SACHS

Crisis with a cure | 25 March 2009 **FINANCIAL TIMES**

Opportunity?

Mobile phones are more pervasively distributed than other technologies and health infrastructures in low-income countries



mHealth Examples

Communication and Training for Healthcare Workers

Remote Data Collection

Disease and Epidemic Outbreak Tracking

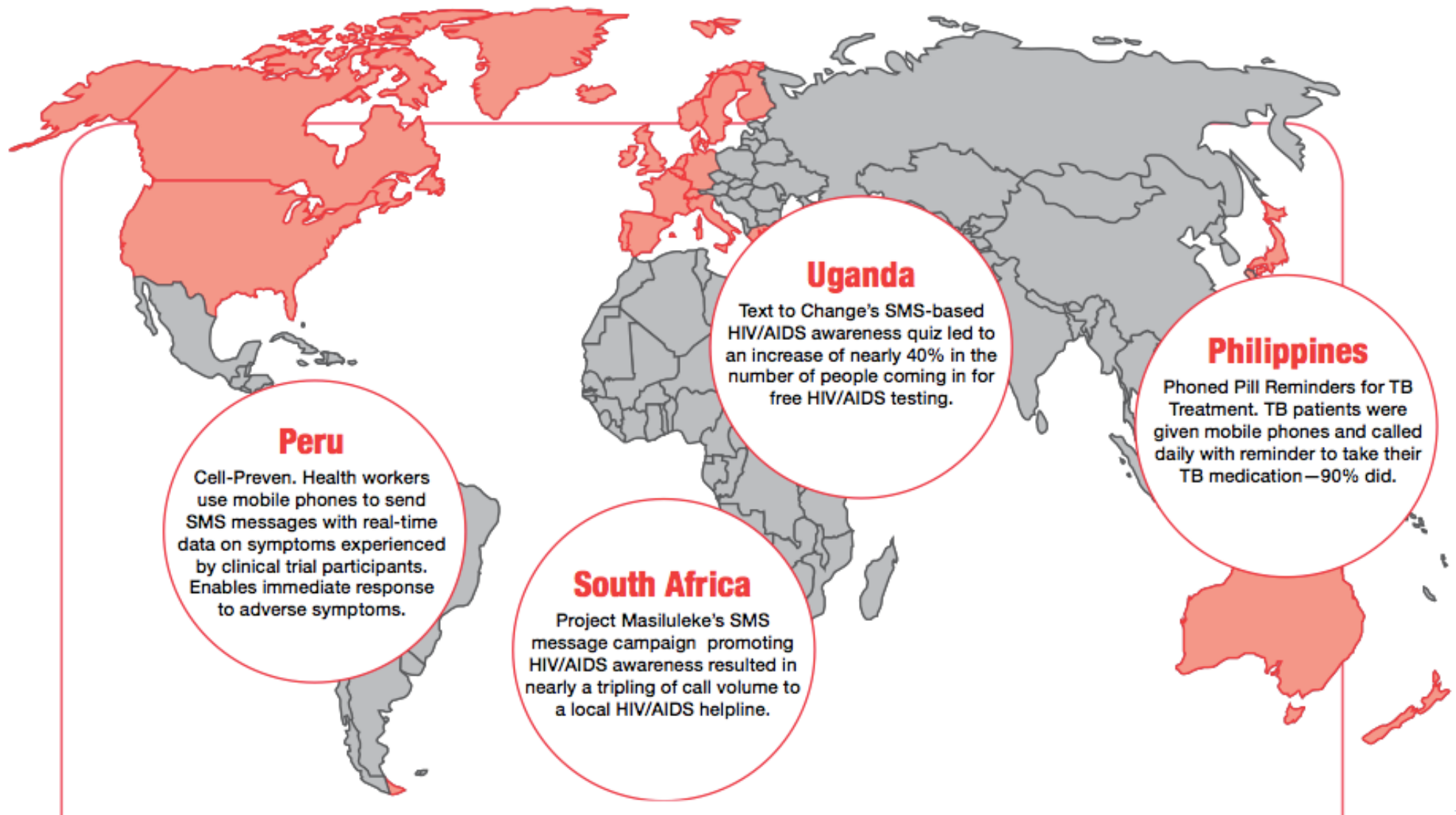
Education and Awareness

Diagnostics and Treatment Support

Remote Monitoring



mHealth Examples



Presenters

Katherine de Tolly (Cell-Life)

Innovative use of cellphone technology for HIV/AIDS
behaviour change communications

Josh Nesbit (FrontlineSMS:Medic)

Mobiles in Malawi

Molly Bogan (D-Tree International)

Improving standards of care with mobile applications in
Tanzania

Presenters

Katherine de Tolly has spent over a decade working on web-based projects. She is representing Cell-Life, a non-profit based in Cape Town, that uses technology to improve the lives of people with HIV.



<http://www.cell-life.org>

Presenters

Josh Nesbit is the Executive Director of FrontlineSMS:Medic, a non-profit organization committed to empowering community health workers worldwide using appropriate mobile technology.



<http://medic.frontlinesms.com/>

Presenters

Molly Bogan is a Program Manager for D-tree International in Tanzania, a non-profit organization that uses mobile technology to empower health workers and managers to deliver high quality care at low cost.



<http://www.d-tree.org/>