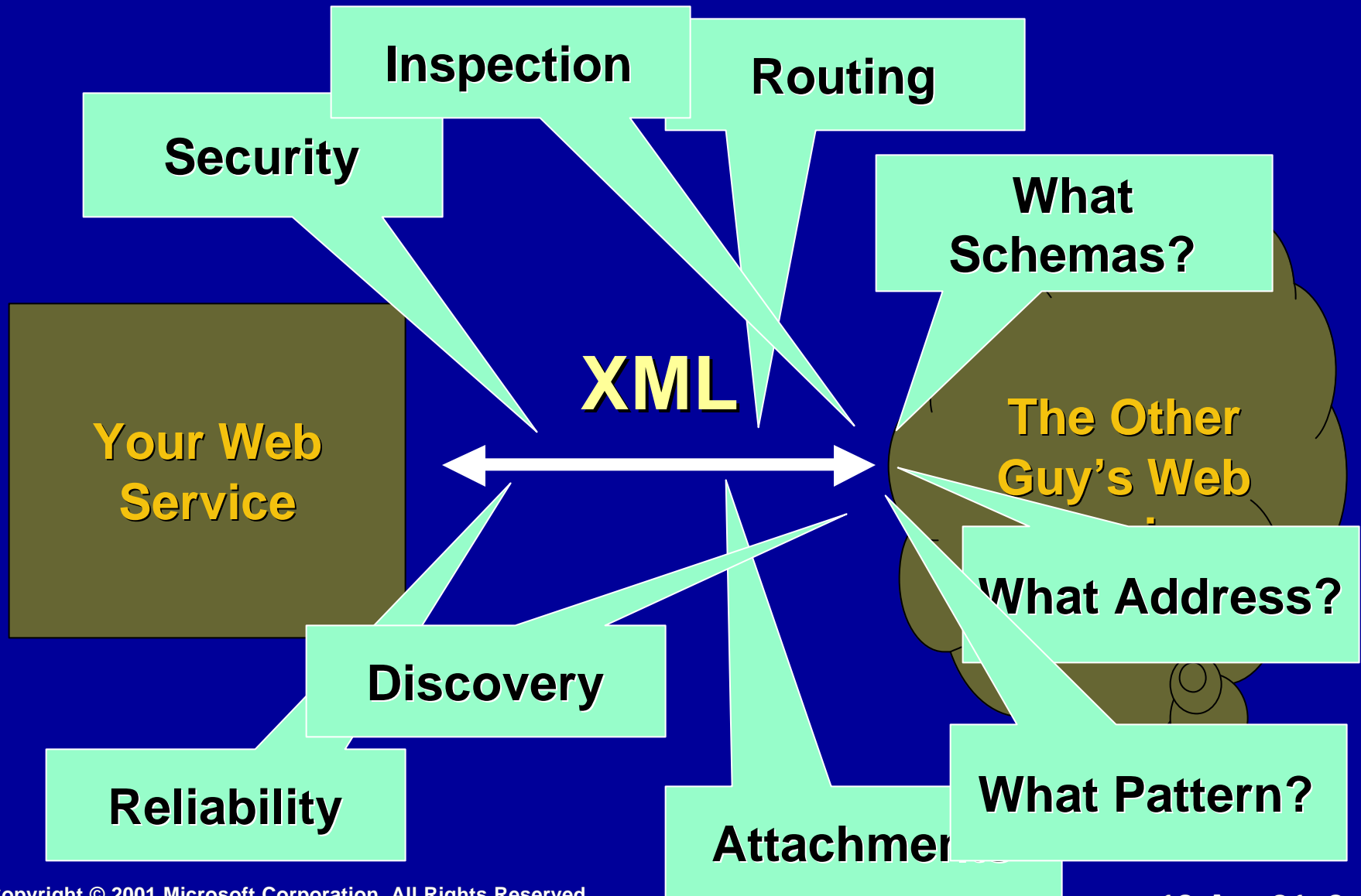


Web Services Framework

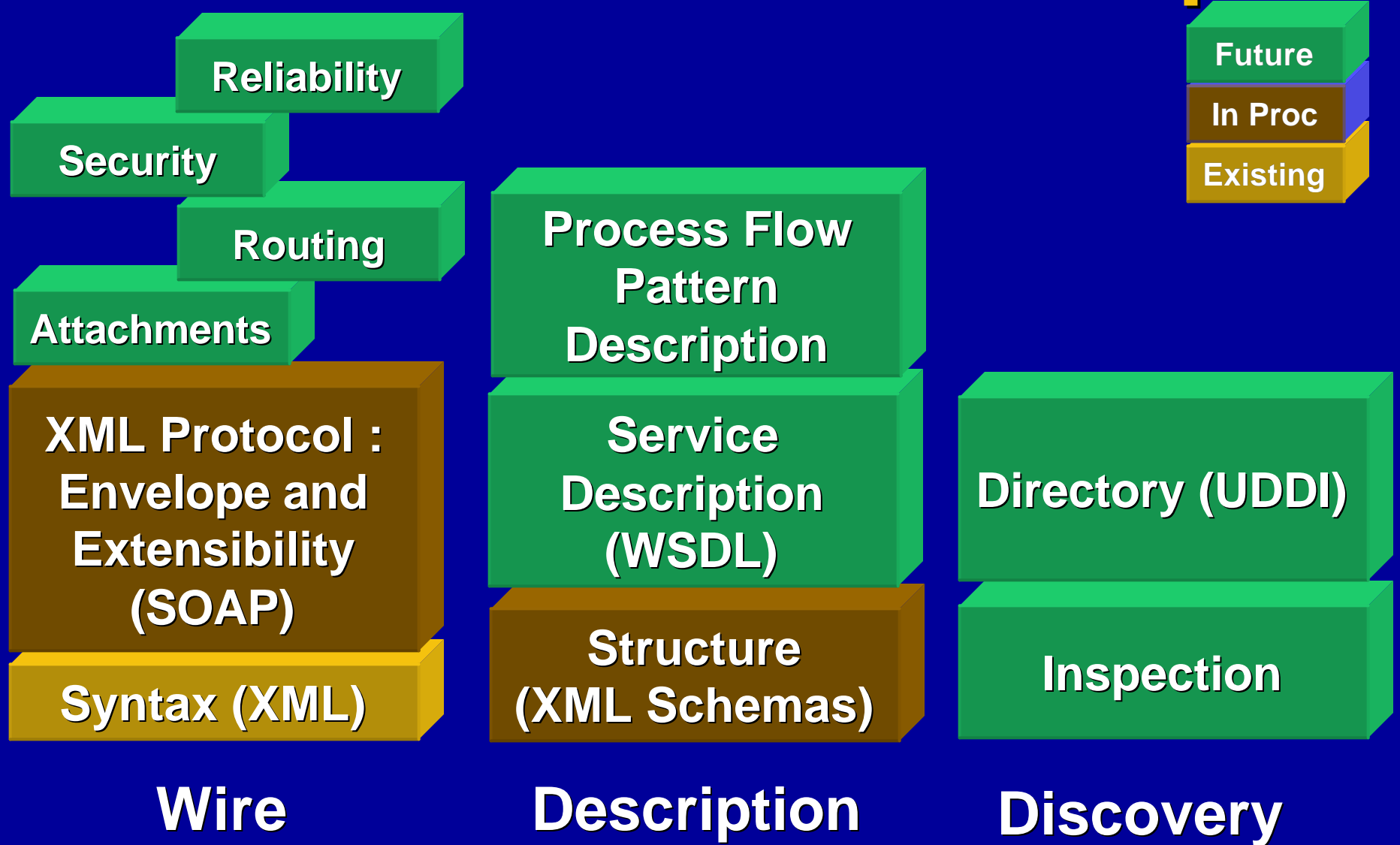
Paper by IBM and Microsoft

**Andrew Layman, XML Web
Services Architect, Microsoft**

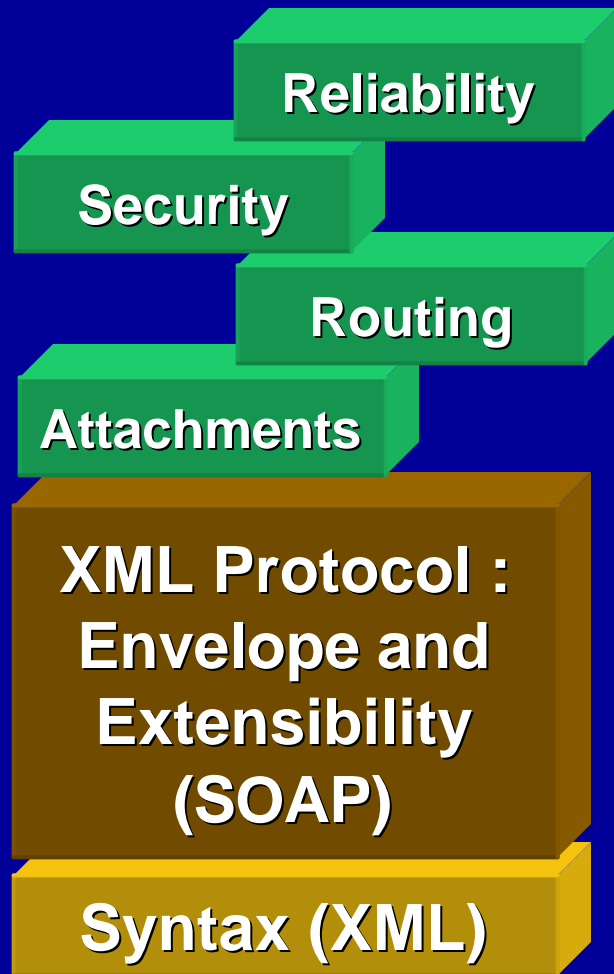
Interoperating Applications



Web Services Roadmap



Wire Protocol Elements



Wire

Binary Attachments

- ❖ Sometimes, conversion of large non-XML data into XML binary (e.g. base64) format is too expensive.
- ❖ Sending the data without conversion would be attractive.

Routing and Correlation

- ❖ ID of sending party
- ❖ ID of destination party
- ❖ Possibly, Ids of intermediaries
- ❖ Means to Correlate a reply to the sent message.



Security

- ❖ **Digital Signature**
 - Prove who sent the message (actually, prove that the message's creator had access to a certain secret.)
 - Prove that the message was not altered *en route*.
- ❖ **Encryption: Prevent third parties from reading the message.**
- ❖ **Whole message or specific parts of messages.**
- ❖ **Not channel-level. Either per message or associated with long-running "business" transaction.**

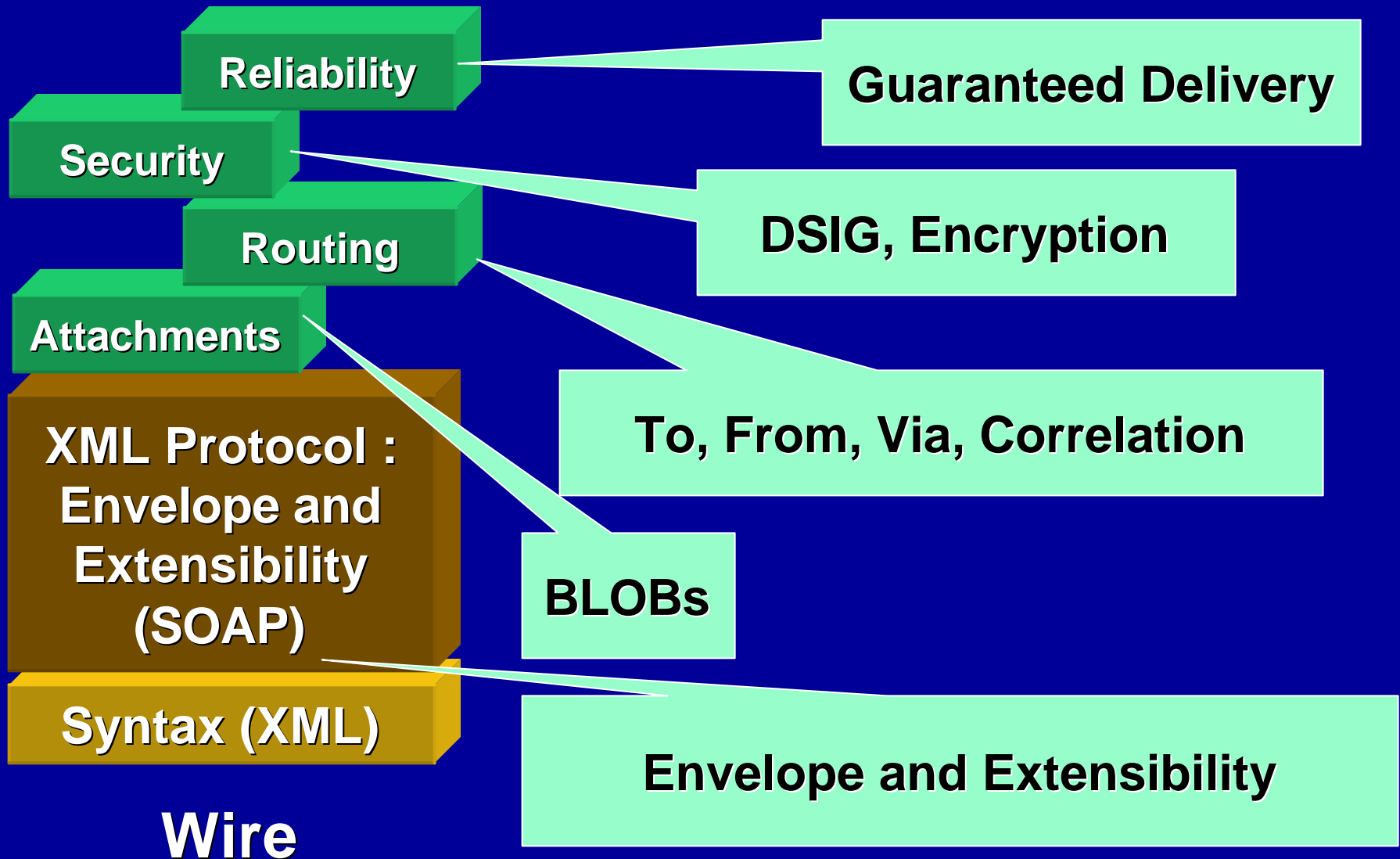
Guaranteed Delivery

- ❖ **At least once**
- ❖ **Not more than once**
- ❖ **In Order**
- ❖ **If the above are not achieved in an agreed-on time, both parties detect that failure has occurred.**

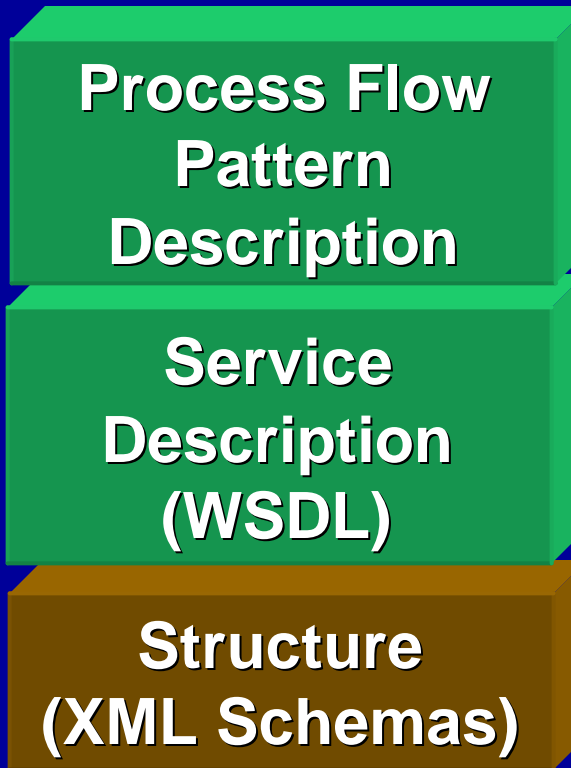
Issue: Scope

- ❖ Often, parties don't just send one message in isolation, but exchange a number of messages back and forth.
- ❖ E.g. Inventory Inquiry, Inventory Confirmation, Purchase Order, PO Confirmation, Shipment notice, Invoice, Payment Advice
- ❖ Should influence our thinking about correlation, security and guaranteed delivery.
- ❖ Implies that there is a *pattern* of messages between the parties.

Wire Protocol Elements



Service Description



Description

Schemas

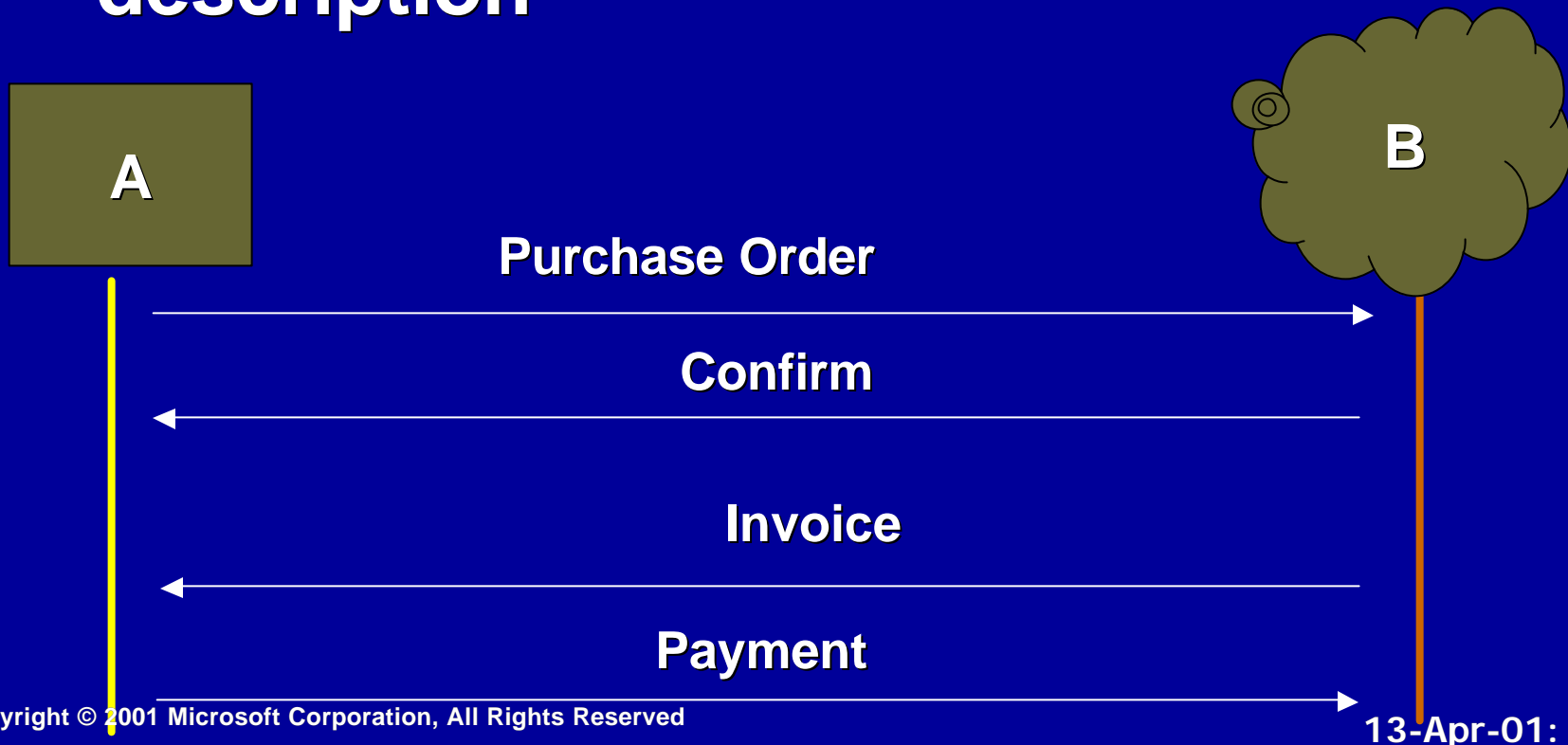
- ❖ Atomic Datatypes
- ❖ Structured Datatypes
- ❖ Subtypes and Classification

Web Service Description

- ❖ **What to send: Messages**
 - **Collection of abstract types that may be sent and received.**
 - **May have named internal parts.**
 - **Bound to specific syntax.**
- ❖ **Where to send: Ports**
 - **Collection of abstract types to which to send the messages.**
 - **Bound to specific Addresses.**

Process Flow Patterns

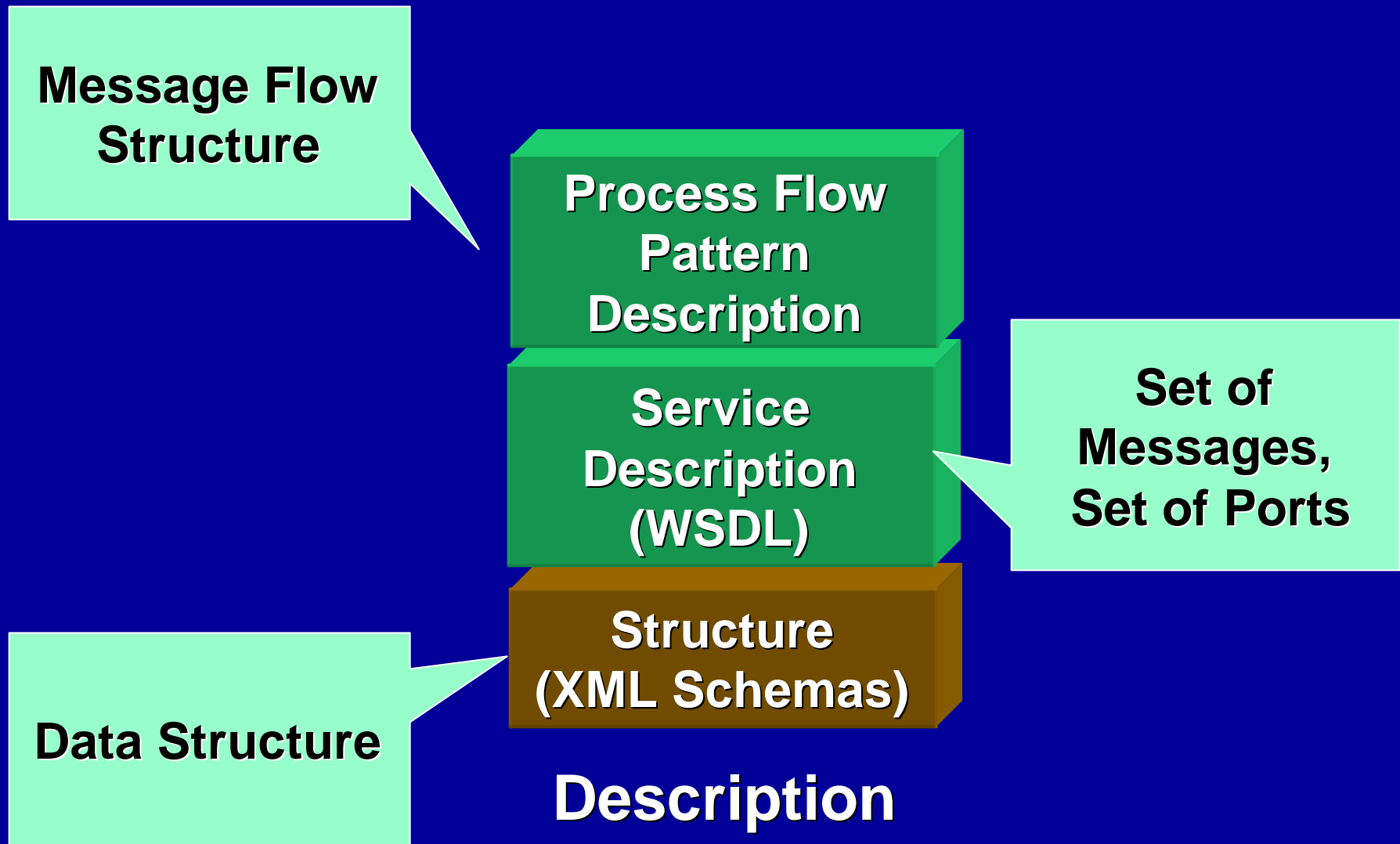
- ❖ Which patterns of messages are valid
- ❖ Built on the elements of the service description



Issue: Scope Again

- ❖ *A pattern* of messages suggests a long-running dialogue between the parties.
- ❖ Defense against replay attacks suggests connection between security and at-most-once delivery.
- ❖ Should influence our thinking about wire protocols and the description of services.
- ❖ These should be thought about in the context of potentially long-running dialogues.

Service Description



Discovery

Find a Service based on some characteristics.

Given a Service, what is its Description?

Directory (UDDI)

Inspection

Discovery

Conclusions

- ❖ **Protocols are the basis for Interoperability**
- ❖ **Protocols are not just individual messages, but *patterns* of messages.**
- ❖ **The Web Services Framework is an *integrated* design.**
- ❖ **Each part needs to be *designed* and *tested* in the context of the others.**