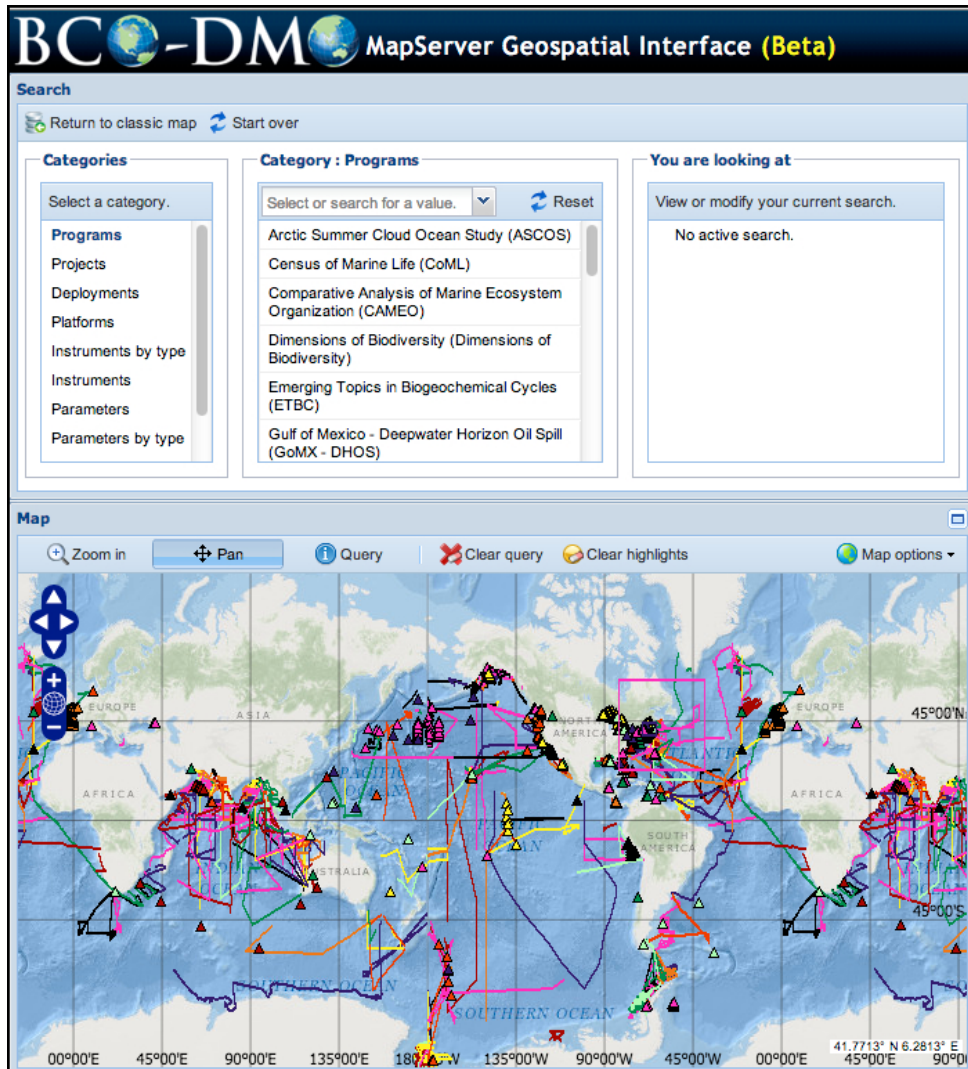


Data Discovery: Unleashing the Power of Geospatial Linked Data

M. Dickson Allison, Charlton Galvarino, Adam Shepherd



DATABASE	
Programs	26
Projects	301
Deployments	1855
Datasets	6793
Instruments	339
Parameters	1300
People	1448
Affiliations	364
Funding	59
Awards	707

MATCHING and MAPPING (entity pairing)

Instrument Mapping Examples		
original data	BCO-DMO	SeaDataNet
SIO-CTD	CTD Sea-Bird 911	Sea-Bird SBE 911 CTD /term/L221/current/TOOL0035
bongo tow	bongo net	plankton net /term/L051/current/22
XBT	Expendable Bathythermograph	Bathythermographs /term/L054/current/132

local → global
disambiguation of terms and concepts →

BCO-DMO
Biological & Chemical Oceanography Data Management Office

HOME DATA RESOURCES ABOUT US

DATABASE

Programs	26
Projects	280
Deployments	1767
Datasets	6602
Instruments	329
Parameters	1286
People	1402
Affiliations	355
Funding	56

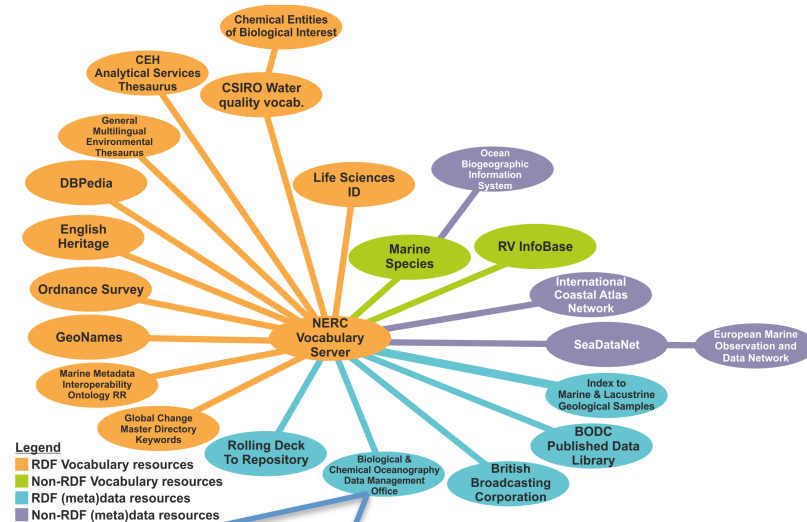
Parameter: depth

Short Description: depth
Short Name: depth
Official Name: depth
Units: meters
Parameter External Identifier: <http://vocab.nerc.ac.uk/collection/P01/current/DEPHPR01/>
Graphable: Yes
No Data Value: nd

▼ **Description**

observation/sample depth, in meters; best estimate; usually calculated from pressure; calculated either from CTD pressure using Fofonoff and Millard (1982; UNESCO Tech Paper #44) algorithm adjusted for 1980 equation of state for seawater (EOS80) or simply equivalent to nominal depth as recorded during sampling if CTD pressure was unavailable

INHERITED CONCEPTS



BCO-DM MapServer Geospatial Interface (Beta)

Search

Return to classic map Start over

Categories

Select a category.

- Parameters by type
- Programs
- Projects
- Deployments
- Platforms
- Instruments by type
- Instruments
- Parameters

Category : Parameters by type

Select or search for a value. Reset

- Microbiota Taxonomy > Bacteria
- EARTH SCIENCE > Biosphere > Microbiota Taxonomy > Phytoplankton
- Phytoplankton taxonomic abundance in water bodies
- Abundance of Prochlorococcus (ITIS: 610076; WoRMS 345515) per unit volume of the water body by automated flow cytometry

You are looking at

View or modify your current search.

Parameters by type

Abundance of Prochlorococcus (ITIS: 610076; WoRMS 345515) per unit volume of the water body by automated flow cytometry

Map

Zoom in Pan Query Clear query Clear highlights Map options

Map showing the North Atlantic Ocean with a search area highlighted.

5 March 2014

Geospatial Linked Data

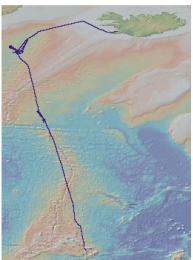
LINKING VIA SHARED CRUISES

Rolling Deck to Repository (R2R)

Home About R2R Cruise Catalog QA Dashboard News Contact Us Internal

Catalog Status
(In Service) Vessels: 26
Cruises: 3381
Archived Files: 14784199
February 24, 2014

Home
Cruise Catalog: KN207-03



Operator: Woods Hole Oceanographic Institution
Vessel: Knorr

Cruise ID	Start Date	Start Port	End Date	End Port
KN207-03	2012-06-15	Ponta Delgada	2012-07-14	Reykjavik

Project: Lipid Lubrication of Oceanic Carbon and Sulfur Biogeochemistry Via a Host-Virus Chemical Arms Race

SCIENCE PARTY
FILE MANIFEST
UNDERWAY DATA SETS

Device Type	Make-Model [Location]	Files	Archive Status
adcp	Hawaii UHDA5	List	
acpssys (primary)	WHOI Calloope	List	
ctd	Sea-Bird SBE-911plus	List	
ctd	Sea-Bird SBE-911plus processed	List	
gravimeter	Bell BGM-3	List	

R2R PRODUCTS
RELATED DATA

BCO-DMO
Biological & Chemical Oceanography Data Management Office

HOME DATA RESOURCES ABOUT US

DATABASE

New Entry
Programs 26
Projects 301
Deployments 1855
Platforms 325
Datasets 6793
Instruments 339
Parameters 1300
People 1448
Affiliations 384
Funding 59
Awards 707
Contact Status 270
Archive 164

Account: mallison
Logout

Deployment: KN207-03
View Edit Delete Add new deployment
Map It Check R2R

R2R Cruise Catalog: KN207-03

Deployment: KN207-03
Chief Scientist: Dr Kay D Bidle (Rutgers University, Rutgers IMCS)
Synonyms:
Platform: R/V Knorr
Platform Type: vessel
Start Date: 06/15/2012
End Date: 07/14/2012
Location: North Atlantic; transect from Ponta Delgada, Azores to Reykjavik, Iceland

Description
The 30 day cruise in June-July 2012 aboard the R/V Knorr follows a transect from Ponta Delgada, Azores to Reykjavik, Iceland. The goal for this cruise is to transect the region of the NEA spring bloom and to extensively sample the bloom when it is encountered. The cruise track is modeled after a recent study in this area that documented intense coccolithophore (and other haptophyte) blooms across Rockall Hatton Plateau to the Iceland Basin (55-63°N latitude) and coincided with elevated POC and TEP. The science plan calls for sampling of 12 water depths at 20 station locations. In addition, three stations will be occupied for several days to allow opportunities for extended experiments and sinking particulate carbon collection and flux determination. Given that the timing of the bloom is difficult to predict exactly, the precise cruise track will be determined by remote sensing data (satellite and autonomous glider from Rutgers) analyzed by the Pis a few days before and during the cruise. (See more from the WHOI Cruise Synopsis.)

Cruise information and original data are available from the NSF R2R data catalog.

Datasets

Data from this Deployment only	Full Dataset (multiple deployments)
alongtrack (KN207-03)	alongtrack
bottle (KN207-03)	bottle
CTD_Profiles (KN207-03)	CTD_Profiles
event log (KN207-03)	event log

GEOSPATIAL ACCESS

SEARCH
CONTRIBUTE DATA
Getting started
How-to Guide
FAQs

BCO-DMO has geospatial metadata about data collection.

R2R has geospatial metadata about entire cruise.

THE FUTURE

