



Map4RDF-iOS: a tool for exploring Linked Geospatial Data

Alejandro Llaves
Oscar Corcho
Alejandro Fernández-Carrera

Ontology Engineering Group
Universidad Politécnica de Madrid
Madrid, Spain
allaves@fi.upm.es

Campus London,
March 6th 2014

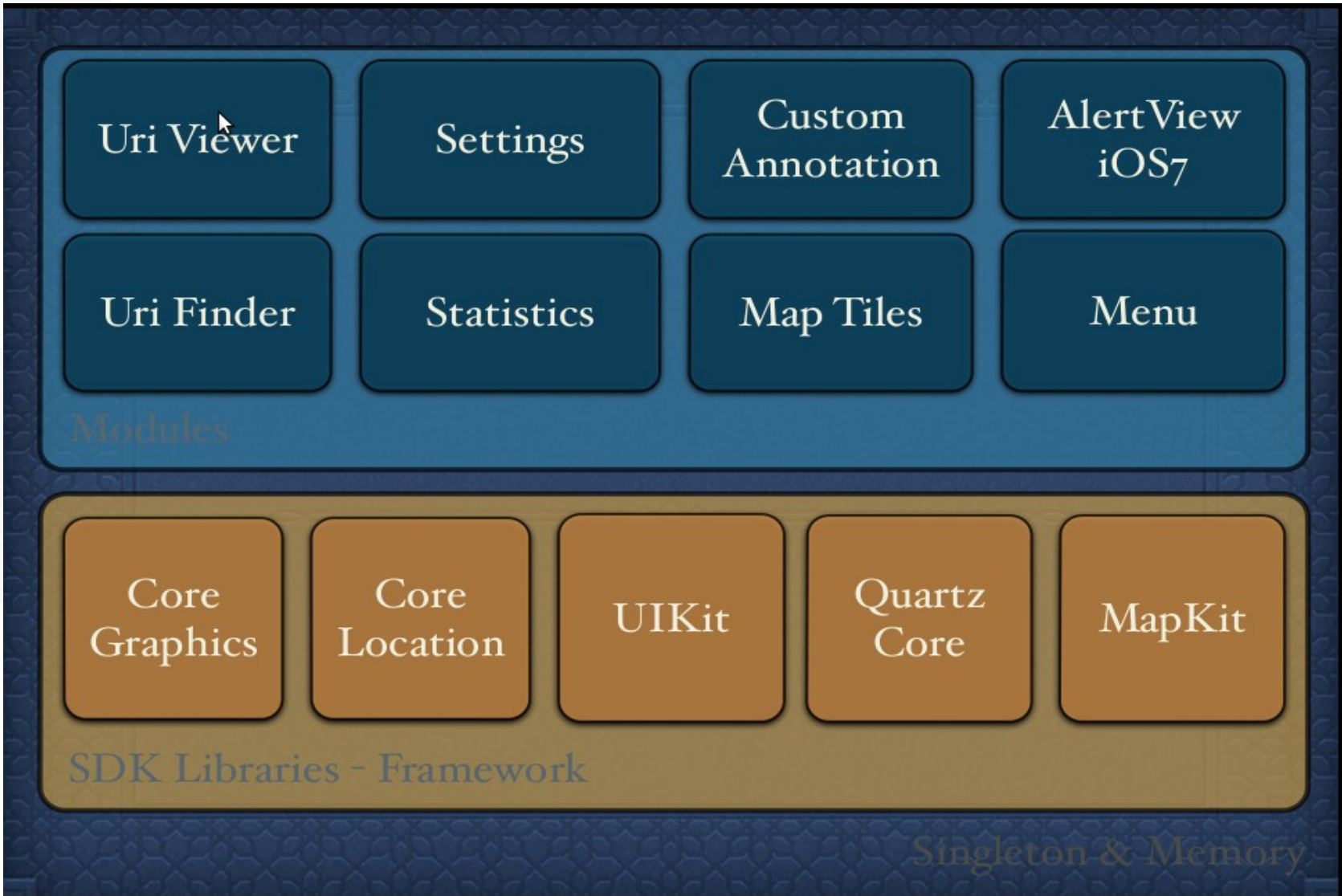
Map4RDF-iOS allows visualizing and browsing LGD.

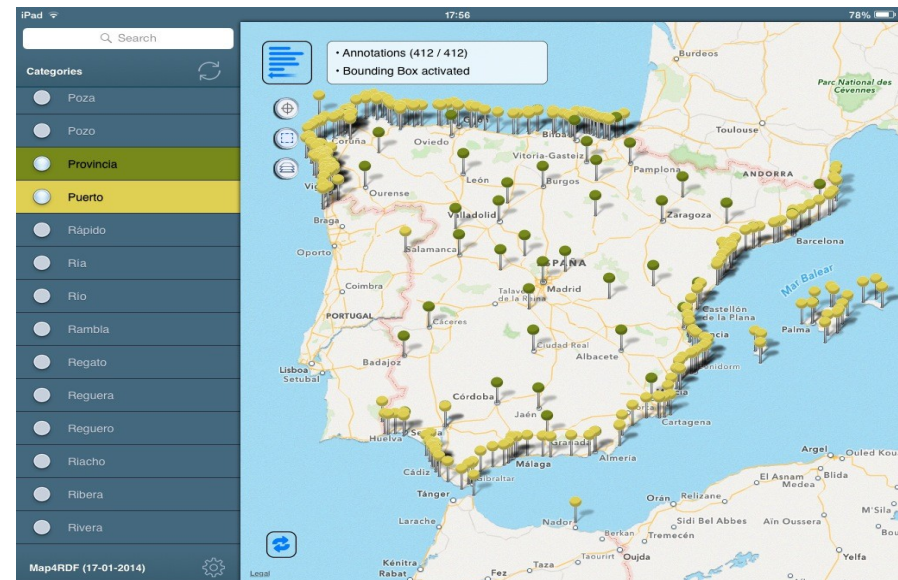
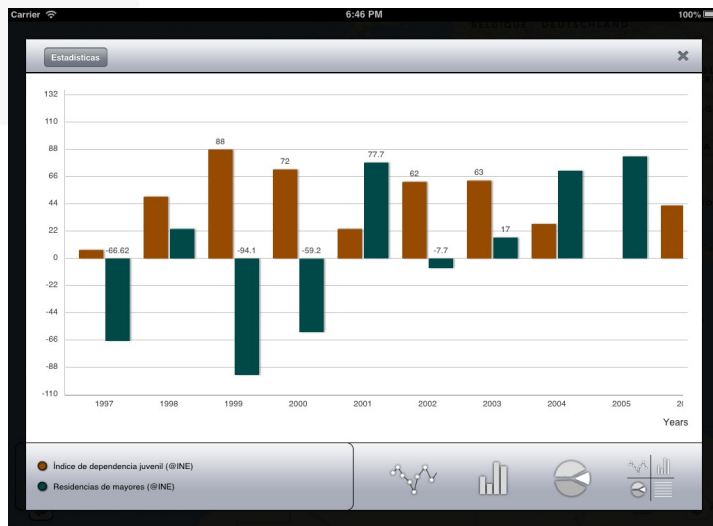
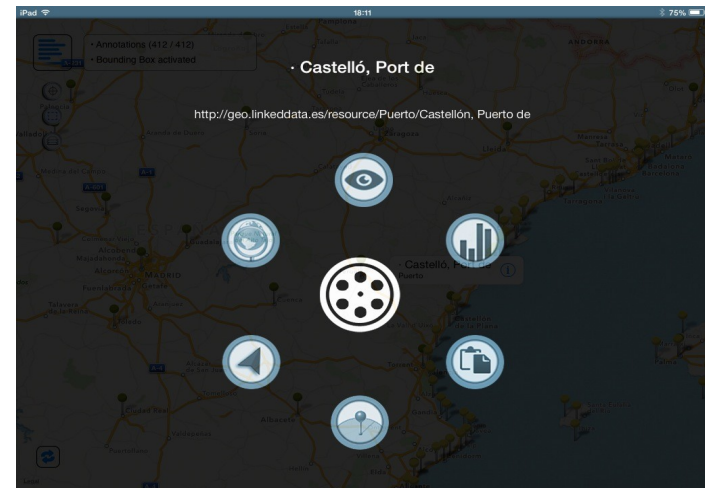
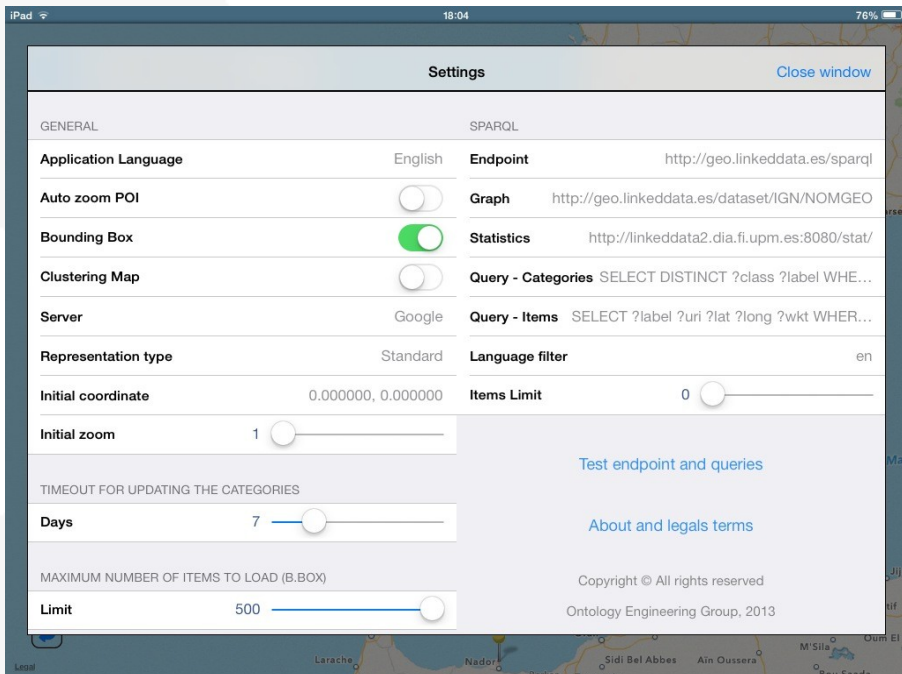
Motivation

- Increase of LGD sets.
- Not many tools for visualization.
- Developed in parallel to web-based Map4RDF
 - official <http://map4rdf.oeg-upm.net/>
 - code <http://oeg-upm.github.io/map4rdf/>



- End users: citizens / non-geographers / LGD providers
- Main features
 - Support for mobile devices running iOS (v. 5 to 7).
 - Support for multiple map servers (OSM, Google, Apple, Nokia).
 - Visualization of statistical data modelled as W3C's DataCube.
 - Support for multiple geospatial data models: W3C Geo XG, GeoLinkedData, and WKT/GeoSPARQL.
 - Clustering of data points.
 - Highly customizable by end users, e.g. definition of SPARQL endpoints and queries.
 - Optimized memory management due to native code.
- Limitations
 - Only support for (non-authenticated) SPARQL endpoints.
 - One map server and one endpoint at a time.





Basic features - <http://youtu.be/ervtO29Az-M>
 LocaliData - http://youtu.be/k5Xq2e_IC7Y

- Conclusions
 - Map4RDF-iOS offers an intuitive and usable GUI to visualize and explore LGD.
 - Data load and browsing faster than the web-based version.
 - Analysis of LGD from mobile devices.
 - Access to LGD for non-specialists.
 - Fosters the re-use of public/private datasets.

Link to App Store: <https://itunes.apple.com/en/app/map4rdf-lite/id828604407?mt=8>

- Future work
 - Connectivity module to save & share configurations, snapshots, and LGD datasets.
 - Visualization of Linked Stream Data in near real-time (link to our current work on SPARQL_{Stream}).
 - Module for data edition suggestions.



View In iTunes

Free

Category: [Navigation](#)

Released: Mar 06, 2014

Version: 1.0

Size: 10.0 MB

Language: English

Seller: Localidata, S.L.

© 2014, Ontology Engineering

Group

Rated 4+

- From reviews: *“Does the RDF linked data add any integration value over a similar geo database client?”*
- Need to standardize geographic representation in LD: WGS84, GeoSPARQL, GeoJSON...
- Specification of coordinate systems
- ...



Thanks!

Special thanks to Daniel Garijo and
Miguel Ángel García-Delgado

Alejandro Llaves
allaves@fi.upm.es



Visualization of LGD

- LinkedGeoData.org project
- Map4RDF (Leon et al. 2012, Calbimonte et al. 2013)
- [spatial@linkedspace](mailto:spatial@linkedspace.org) (Keßler et al. 2012)
- SexTant (Bereta et al. 2013)