



Core Public Service Vocabulary - The Italian Application Profile

**Berlin Workshop: Maximising interoperability —
core vocabularies, location-aware data and more**
Berlin 25-26 November 2015

Giorgia Lodi, Gabriele Ciasullo, Antonio Rotundo
giorgia.lodi | ciasullo | antonio.rotundo@agid.gov.it



The screenshot displays the INPS 'Servizi Online' portal. The interface is highly cluttered with multiple overlapping sections. On the left, there is a sidebar with a list of services under the heading 'Servizi online'. The main content area is divided into several sections: a top navigation bar with 'BASTACODE', a central 'Servizi' section with a search bar, and a 'Servizi più richiesti' section listing various services. On the right, there are additional sections for 'Prenotazione e assegnazione spazi' and 'Professionisti'. The overall design is inconsistent, with different colors and fonts used for similar elements, making it difficult to navigate and understand the available services.

LACK OF

- A clear and agreed classification of public services
- A shared naming of the same public services offered by a variety of administrations (e.g., municipalities)
- A standard definition of the elements that allows one to clearly represent the concept of “public service”

CONSEQUENCE

- Difficult to meet semantic and technical interoperability requirements



Objectives and potential benefits

OBJECTIVES: Agency for Digital Italy (AgID) is operating for obtaining these results

- General, common definition of interoperability profiles for **data** and **metadata**
- Definition of the **Core Public Service Vocabulary - Italian Application Profile (CPSV-ITAP)**
 - Minimum set of metadata required to document public services made available to citizens and enterprises by public administrations

POTENTIAL BENEFITS

- ✓ Harmonization in the public service data representation
- ✓ Facilitation in the exchange of data on public services in national shared infrastructures
- ✓ Basis for the development of the **Italian public service catalogue**
 - Make it an authentic source for national shared infrastructures (e.g., Italian public system for e-identification)



PUBLIC SERVICE

*A set of **mandatory and discretionary acts** carried out by a **public administration** (or on behalf of a public administration) for the **advantage of citizens and enterprises***

Public services can be **online** and **physically available, active and under-development services**



Italian public services catalogue



Facilitates the
discovery of
public services
by citizens and
enterprises



Comprehensive
platform for
sharing best
practices on
services

Building a community

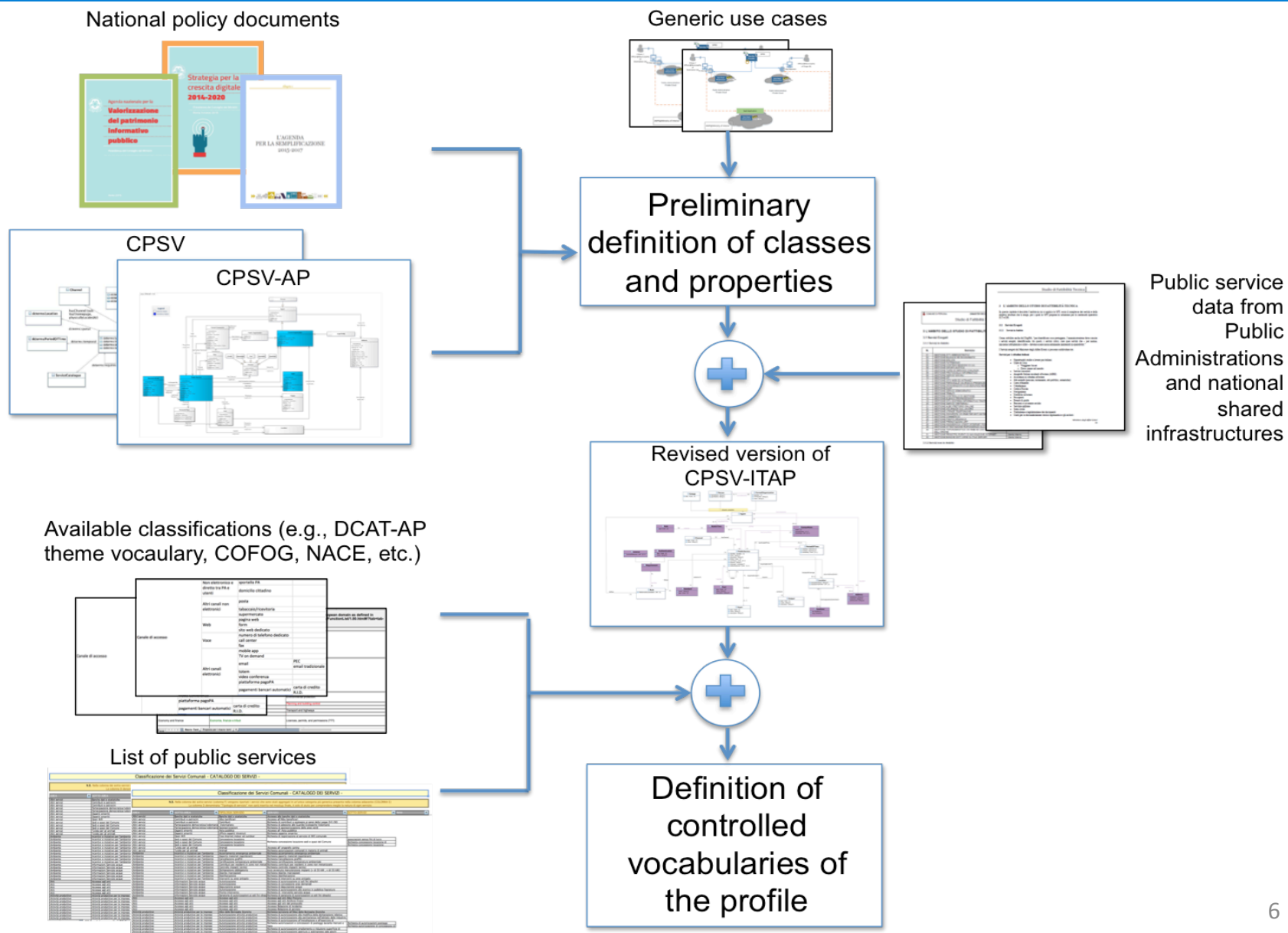


Monitor
standardization
and digitalization
objectives of public
services

Fine-tuning of political
decisions

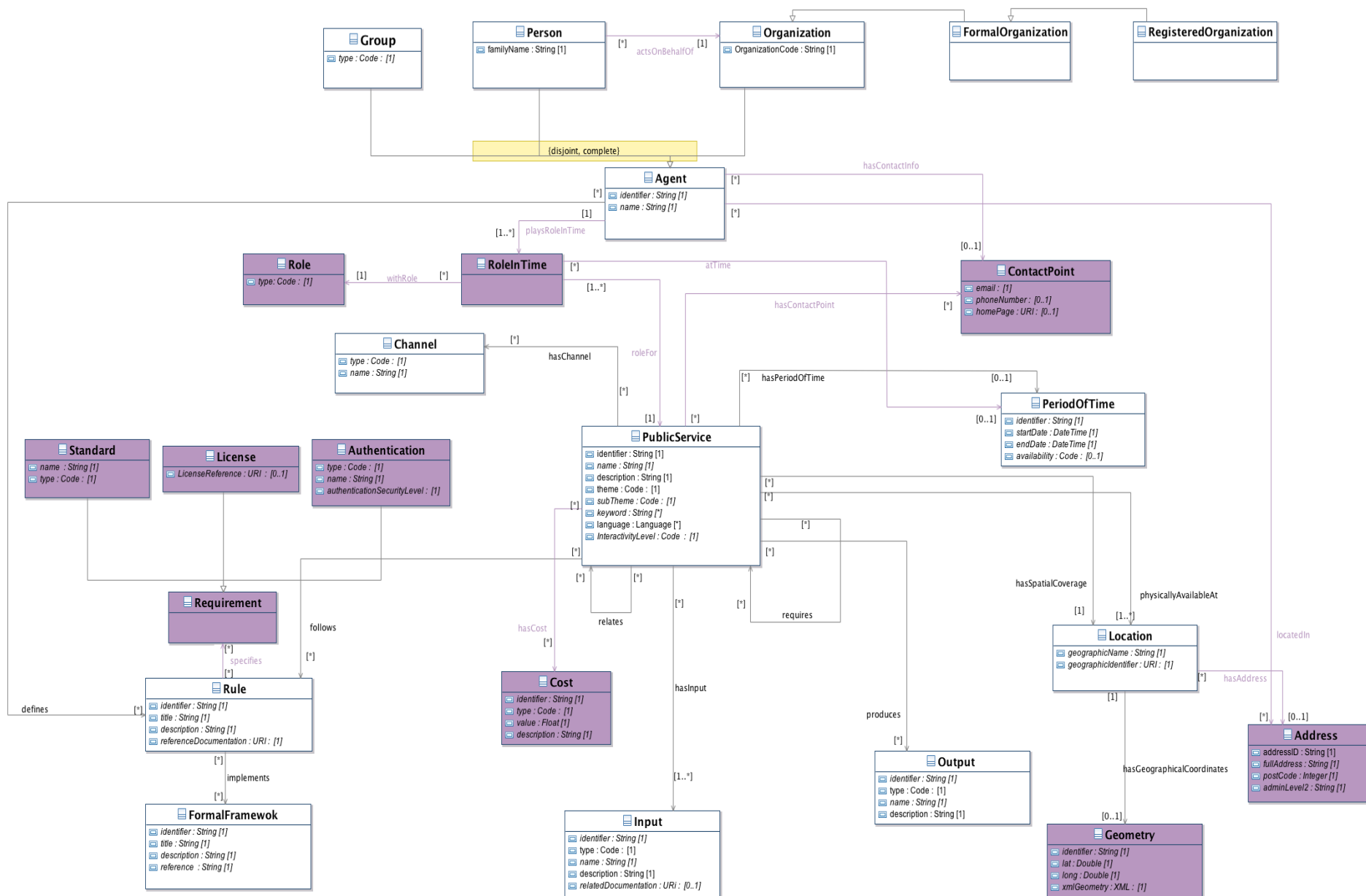


Methodology





The data model: CPSV-ITAP





- **DCAT-AP theme** for the public service theme
- **COFOG and NACE** used to define the subtheme for the public service
- Revised version of **UK ESD toolkit** – list of the channels to define channels for public services
- **Custom controlled vocabularies** for other types of data according to national initiatives
 - Authentication type



Powered by

1. [Introduction](#)
2. [Classes](#)
3. [Object Properties](#)
4. [Data Properties](#)
5. [Namespace Declarations](#)

Introduction

This is the ontology of the Italian application profile for public services.

Classes

[Address](#) [Agent](#) [Channel](#) [Contact Point](#) [Cost](#) [Formal Framework](#) [Geometry](#) [Input](#) [Location](#) [Output](#) [Period of Time](#)
[Public Service](#) [Requirement](#)

Address^C

[back to ToC](#) or [Class ToC](#)

IRI: <http://dati.gov.it/onto/cpsv-itap/Address>

Current version:

0.1 - stable

is defined by

<http://dati.gov.it/onto/cpsv-itap/>

This class represents an address. In the specific domain it is used to represent either the address through which an offline service can be provided to end-users (citizens and enterprises) or the address of the site of the organization responsible for providing the service.

Agent^C

[back to ToC](#) or [Class ToC](#)

IRI: <http://dati.gov.it/onto/cpsv-itap/Agent>

<http://dati.gov.it/onto/cpsv-itap.owl> ➡ not yet published



Recommendations



Use of controlled vocabularies

Possibly use the same vocabularies for datasets and services since they may be linked to each other

HELPFUL FOR IMPLEMENTING
Article 5 paragraph 1 of
Directive 2013/37/EU



Use of Core Vocabularies application profiles for both metadata and transversal data

data independent of specific domains (e.g., people, organizations, locations, services)

HELPFUL FOR IMPLEMENTING
Article 9 of Directive 2013/37/EU



- **Include the profile** in the upcoming revision of the **Italian technical guidelines on the enhancement of PSI**
 - The guidelines are the means used to support public administrations to implement the Italian PSI Directive transposition
- **Use the profile** for the implementation of the **Italian catalogue of public services**
- **Use the profile** for the definition of the **national data architecture**
- Investigate how to take advantage of a **common interoperability profile for service interactions** within Public Administrations



Thank you for the attention!